

A

หมวดอะไหล่ แม่พิมพ์พลาสติก

Standard Components for Plastic Mold



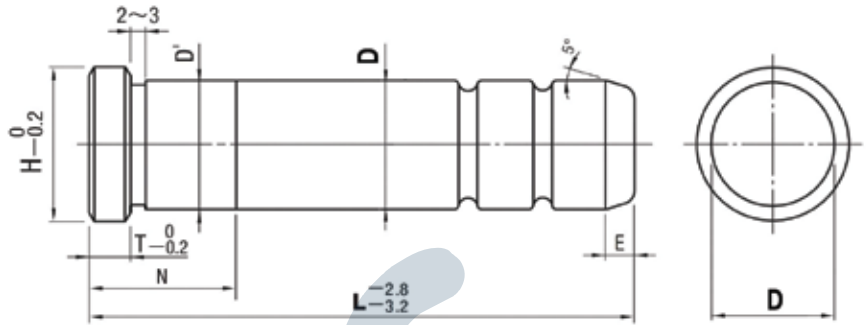
Guide Pins

สลักนำมีขา (GPA)



Code	GPA
Material	SCM415
Hardness	58 HRC ~

Order Code D x L
GPA 25 x 100



Code	D		D'		L	H	T	E
GPA	12	-0.005	12	+0.020	50 - 200	15	6	5
	16		16		50 - 300	20		
	18		18		50 - 300	23		
	20		20		50 - 350	25		
	25	-0.020	25	+0.005	50 - 350	30	8	
	30		30		50 - 350	35		
	35		35		55 - 400	40		
	40		40		130 - 450	45		

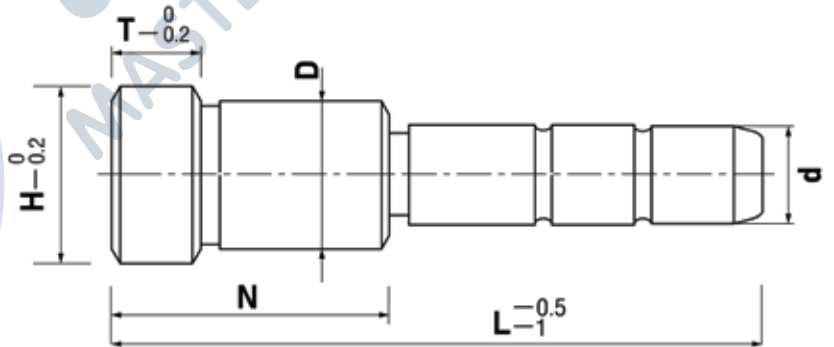
L	~ 50	55 - 95	100 - 130	135 - 160	165 - 220	225 ~
N	15	20	25	30	35	40

Guide Pins สลักนำมีขาสองตอน (GPB)



Code	GPB
Material	SUJ2
Hardness	58 HRC ~

Order Code d x L x N
GPB 25 x 100 x N30



Code	d		D		H	T	L	N
GPB	16	-0.016	25	+0.021	30	6	กำหนดตามแบบลูกก้า	กำหนดตามแบบลูกก้า
		-0.027						
	20	-0.020	30	+0.025	35	8		
			35		+0.009			
	30	-0.033	42	+0.030	47	10		
	35	-0.025	48		54			
	40		-0.041	55	+0.011	61		
	50	-0.030	70	76				
60	-0.049	80		86	15			

หมายเหตุ ลูกก้าต้องกำหนดระยะ: N ตามขนาดที่ต้องการ (ระยะ: N ขึ้นอยู่กับความหนาของแผ่น Plate ที่นำสลักไปสวม)

Guide Pins สลักนำมีขา (GPJL)

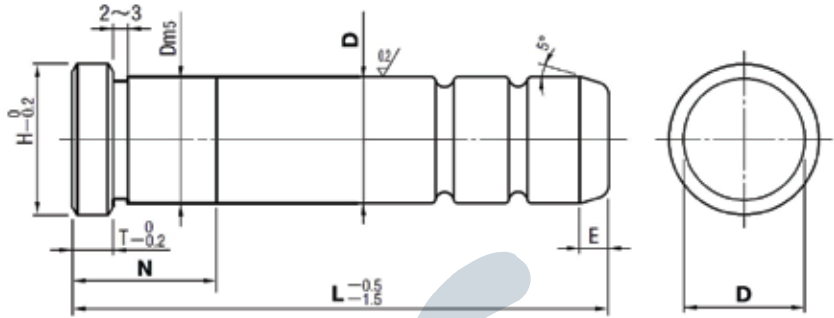
A

Standard Components
for Plastic Mold



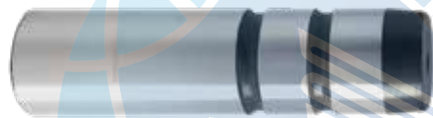
Code	GPJL
Material	SUJ2
Hardness	58 HRC~

Order Code D x L x N
GPJL 25 x 100 x N20



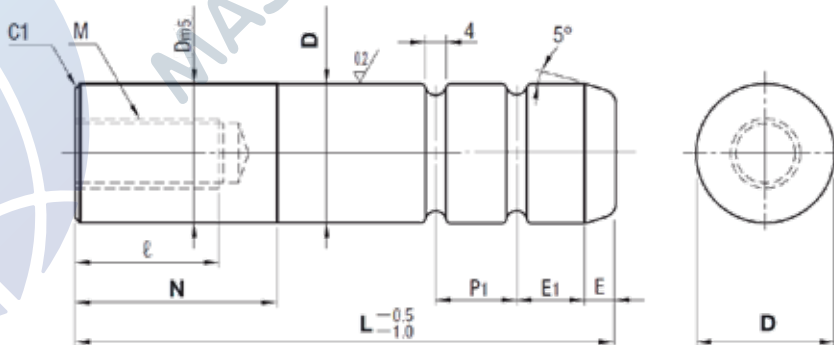
Code	D	Dms	H	T	E	L	N	
GPJL	8	-0.015	8	+0.012	11	3	40 - 80	กำหนดตามแบบลูกค้า
	10	-0.020	10	+0.006	13	5	40 - 80	
	12	-0.020	12	+0.015	17	6	40 - 200	
	13	-0.025	13	+0.007	18		40 - 200	
	16	-0.025	16	+0.007	21	5	40 - 250	
	20	-0.025	20	+0.017	25		50 - 300	
	25	-0.030	25	+0.008	30		50 - 350	
	30	-0.030	30	+0.020	35	8	60 - 400	
	35	-0.030	35	+0.009	40		70 - 450	
	40	-0.040	40	+0.009	45	10	100 - 500	
	50	-0.040	50	+0.024	56		120 - 550	
	60	-0.030	60	+0.011	65	15	200 - 550	
	-0.050							

Guide Pins สลักนำ (GPOL)



Code	GPOL
Material	SUJ2
Hardness	58 HRC~

Order Code D x L x N
GPOL 35 x 100 x N30



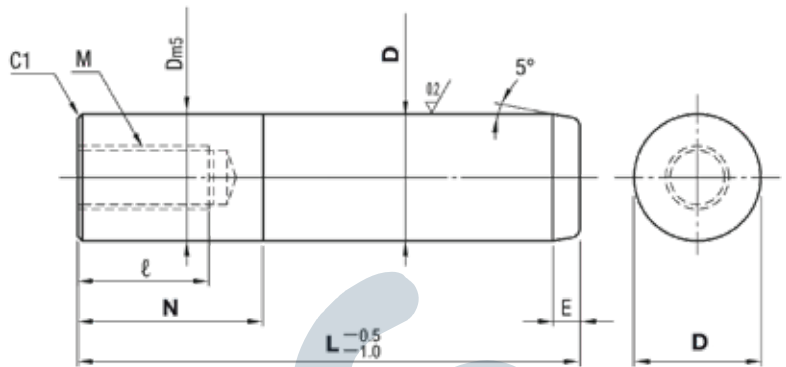
Code	D	Dms	L	N	E	E1	P2	No. of groove	M x P	ε			
GPOL	35	-0.030 -0.035	35	+0.020 +0.009	100	8	14	12	2	M16 x 2.0	32		
												110 120 130	0 - 60
												140 150 160	0 - 80
												170 180 190 200	0 - 80
	40	-0.030 -0.040	40	130 140	0 - 60	8	26	24	2	M16 x 2.0	32		
												150 160 170 180 190	0 - 80
												200 210 220	0 - 80
												150	0 - 80
	50	-0.030 -0.040	50	160 170	0 - 80	8	28	26	2	M16 x 2.0	32		
												180 190	0 - 100
												200 210 220 230 240	0 - 100
												250 260	0 - 100
	60	-0.030 -0.050	60	200 210 220 230 240	0 - 120	8	30	28	2	M20 x 2.5	40		
												250 260 270 280	0 - 120

Guide Pins สลักนำ (GPSL)



Code	GPSL
Material	SUJ2
Hardness	58 HRC ~

Order Code D x L x N
GPSL 30 x 100 x N25



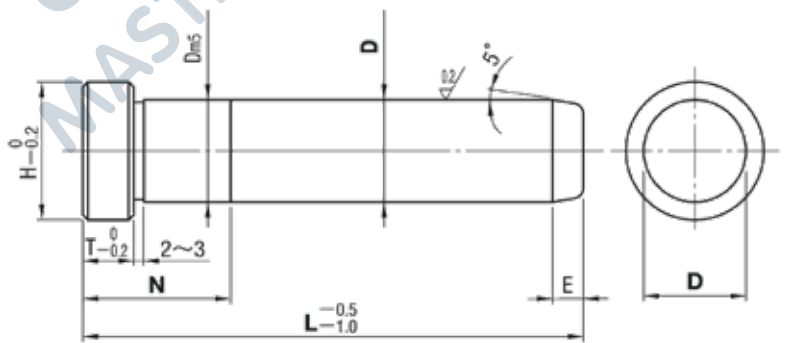
Code	D		Dm5		L	N	M x P	ℓ	E
GPSL	8	-0.015	8	+0.012	40 - 70	0 - 40	M5 x 0.8	10	3
	10	-0.020	10	+0.006	40 - 70				4
	12	-0.020	12	+0.015	40 - 160	0 - 100	M6 x 1.0	12	5
	13	-0.025	13	+0.007	40 - 200				
	16	-0.025	16	+0.007	40 - 200				
	20	-0.025	20	+0.017	40 - 220				
	25	-0.030	25	+0.008	50 - 260				
	30	-0.030	30	+0.008	70 - 260				
	35	-0.030	35	+0.020	100 - 300	0 - 120	M16 x 2.0	32	8
	40	-0.030	40	+0.009	100 - 300	0 - 140			
	50	-0.040	50	+0.009	100 - 400				
	60	-0.030	60	+0.024	150 - 500	0 - 200			

Guide Pins สลักนำมีขา (GPHL)



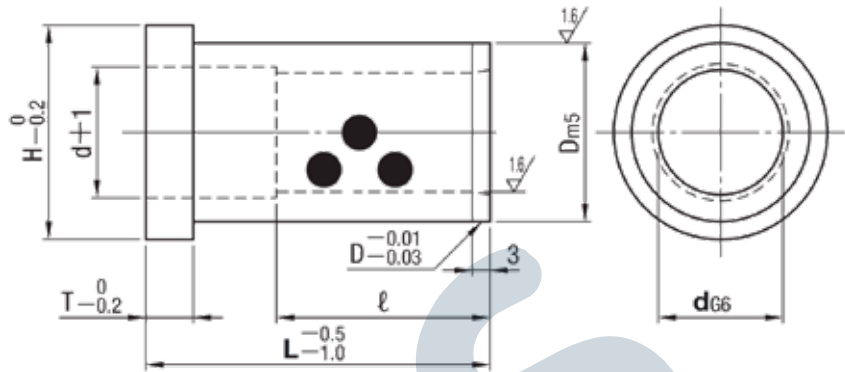
Code	GPHL
Material	SUJ2
Hardness	58 HRC ~

Order Code D x L x N
GPHL 30 x 100 x N25



Code	D		Dm5		L	N	H	T	E
GPHL	8	-0.015	8	+0.012	30 - 80	10 - 60	11	5	3
	10	-0.020	10	+0.006	30 - 80		13		4
	12	-0.020	12	+0.015	30 - 200	10 - 80	17	8	5
	13	-0.025	13	+0.007	30 - 200		18		
	16	-0.025	16	+0.007	30 - 250	13 - 80	21		
	20	-0.025	20	+0.017	30 - 300	13 - 100	25		
	25	-0.030	25	+0.008	40 - 350	13 - 120	30		
	30	-0.030	30	+0.008	50 - 400	13 - 130	35		
	35	-0.030	35	+0.020	60 - 450	13 - 130	40	10	8
	40	-0.030	40	+0.009	80 - 500	15 - 200	45		
	50	-0.040	50	+0.009	100 - 550	17 - 200	55		
	60	-0.030	60	+0.024	200 - 550	20 - 200	65	15	

Oil Free Guide Bushes ปลอกนำไม่ใช้น้ำมันมีำ (GBHDZ)

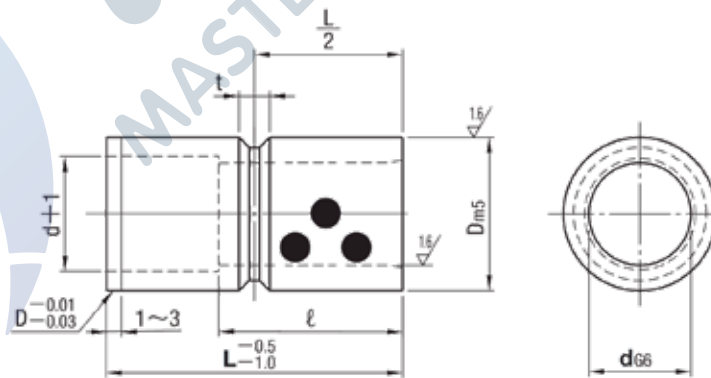


Code	GBHDZ
Material	Brass with graphite

Order Code d x L
GBHDZ 25 x 100

Code	d ₆₆	D _{m5}	H	T	ℓ																						
					L15	L20	L25	L30	L35	L40	L50	L60	L70	L80	L90	L100	L110	L120	L130	L150							
GBHDZ	8	+0.014	12	+0.015	14	-	15	15	-	-	-	-	-	-	-	-	-	-	-	-	-	-	-	-	-		
	10	+0.005	14	+0.007	16	15	20	20	20	20	20	-	-	-	-	-	-	-	-	-	-	-	-	-	-		
	12	+0.017	18	+0.017	22	15	20	25	-	-	-	-	-	-	-	-	-	-	-	-	-	-	-	-	-	-	
	13	+0.006	20		25	25	25	25	25	25	-	-	-	-	-	-	-	-	-	-	-	-	-	-	-	-	
	16	+0.006	25	+0.008	30	6	15	20	25	30	35	30	30	-	-	-	-	-	-	-	-	-	-	-	-	-	
	20	+0.020	30	+0.020	35	8	20	25	30	35	40	40	40	40	40	-	-	-	-	-	-	-	-	-	-	-	
	25		+0.007		35		40	20	25	30	35	40	50	50	50	50	50	50	50	50	50	50	50	50	50	50	50
	30	+0.007	42	+0.009	47	10	25	30	35	40	50	60	60	60	60	60	60	60	60	60	60	60	60	60	60	60	
	35	+0.025	48	+0.024	54		12	40	50	60	70	70	70	70	70	70	70	70	70	70	70	70	70	70	70	70	70
	40	+0.009	55		75			40	50	60	70	80	-	80	-	80	-	80	-	80	-	80	-	80	-	80	-
	50	+0.009	70	+0.011	75	12	60	70	80	-	100	-	100	-	100	-	100	-	100	-	100	-	100	-	100	100	
	60	+0.029 +0.010	80	86	60		70	80	-	100	-	100	-	100	-	100	-	100	-	100	-	100	-	100	-	100	

Oil Free Guide Bushes ปลอกนำไม่ใช้น้ำมันไม่มีำ (GBSDZ)



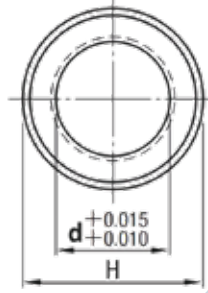
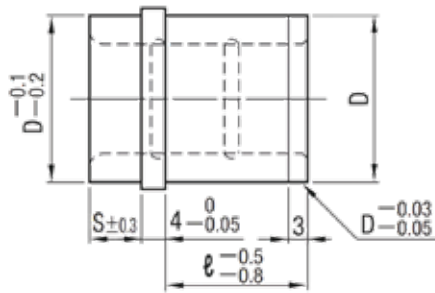
Code	GBSDZ
Material	Brass with graphite

Order Code d x L
GBSDZ 25 x 100

Code	d ₆₆	D _{m5}	t	ℓ																					
				L15	L20	L25	L30	L35	L40	L50	L60	L70	L80	L100	L120										
GBSDZ	8	+0.014	12	+0.015	15	-	-	-	-	-	-	-	-	-	-	-	-	-	-	-	-	-	-	-	
	10	+0.005	14		+0.007	15	20	-	-	-	-	-	-	-	-	-	-	-	-	-	-	-	-	-	-
	12	+0.017	18	+0.017	15	20	25	-	-	-	-	-	-	-	-	-	-	-	-	-	-	-	-	-	-
	13	+0.006	20		+0.008	15	20	25	25	-	-	-	-	-	-	-	-	-	-	-	-	-	-	-	-
	16	+0.006	25	+0.020	15	20	25	30	35	-	-	-	-	-	-	-	-	-	-	-	-	-	-	-	-
	20	+0.020	30		+0.008	15	20	25	30	35	40	40	-	-	-	-	-	-	-	-	-	-	-	-	-
	25	+0.007	35	+0.020	15	20	25	30	35	40	50	-	-	-	-	-	-	-	-	-	-	-	-	-	-
	30	+0.007	42		+0.009	20	25	30	35	40	50	60	60	60	60	60	60	60	60	60	60	60	60	60	60
	35	+0.025	48	+0.024	8 (L=15 →t=6)	25	30	35	40	50	60	70	-	-	-	-	-	-	-	-	-	-	-	-	-
	40	+0.009	55			30	-	40	50	60	70	80	-	-	-	-	-	-	-	-	-	-	-	-	-
	50	+0.009	70	+0.011	8 (L=15 →t=6)	40	50	60	70	80	100	-	-	-	-	-	-	-	-	-	-	-	-	-	-
	60	+0.029 +0.010	80			40	50	60	70	80	100	120	-	-	-	-	-	-	-	-	-	-	-	-	-

Ejector Guide Bushes

ปลอกนำอ็เจ็คเตอร์ (EGBH)

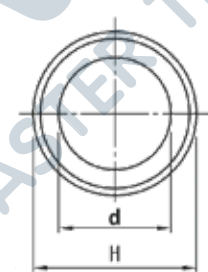
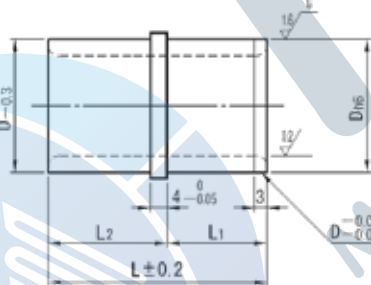


Code	EGBH
Material	SUJ2
Hardness	58 HRC ~

Order Code d x ℓ
EGBH 25 x 15

Code	d	S	H	Dh6	ℓ	
EGBH	10	8	21	18	0 -0.011	10 13 15 20
	12	10	23	20	0 -0.013	10 13
	13	10	25	22		10 13 15 20 25
	16	10	28	25	0 -0.016	10 13 15 20 25
	20	10	33	30		10 13 15 20 25 30
	25	10	38	35		13 15 20 25 30
	30	15	43	40	0 -0.016	13 15 20 25 30
	35	20	48	45		20 25 30
	40	20	55	52	0	20 25 30
50	20	65	62	-0.019	25 30	

Ejector Guide Bushes ปลอกนำอ็เจ็คเตอร์ (EGB)



Code	EGB
Material	SUJ2
Hardness	58 HRC ~

Order Code d x L
EGB 30 x 42

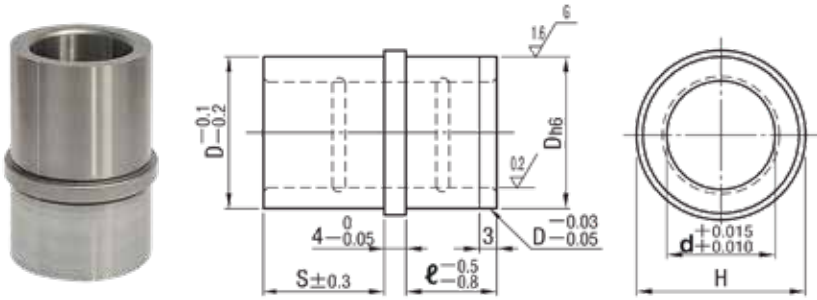
Code	d	L	Dh6	H	L1	L2		
EGB	10	+0.014	23	16	0 -0.011	20	12	11
		+0.005	25	18		22	12	13
	12	+0.017 +0.006	32	25	0 -0.013	30	12	13
			32				14	18
			42				19	23
			25				12	13
	16	+0.020 +0.007	32	30	0 -0.016	35	14	18
			42				19	23
			52				24	28
			25				12	13
	20	+0.025 +0.009	32	35	0 -0.016	40	14	18
			42				19	23
			52				24	28
			32				14	18
	25	+0.025 +0.009	42	40	0 -0.016	45	19	23
			52				24	28
			32				14	18
			42				19	23
	30	+0.025 +0.009	52	50	0 -0.016	55	19	23
			32				24	28
42			14				18	
52			19				23	
40	+0.025 +0.009	52	60	0 -0.019	66	24	28	
		32				14	18	
50	+0.025 +0.009	52	60	0 -0.019	66	24	28	

Ejector Guide Bushes

ปลอกนำอ็เจกเตอร์ (EGBN)

A

Standard Components
for Plastic Mold



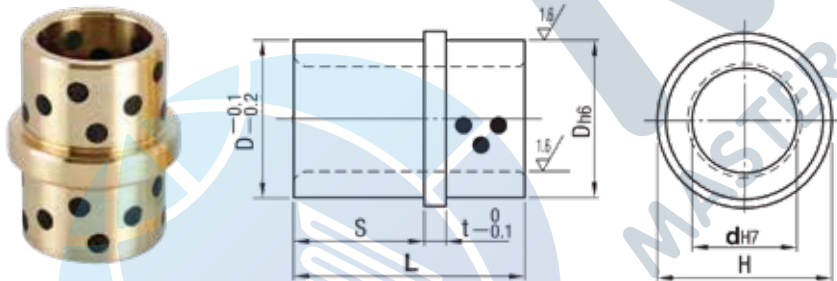
Code	EGBN
Material	SUJ2
Hardness	58 HRC ~

Order d x ℓ
25 x 20

Code	d	Dh6	H	S	ℓ
EGBN	13	22	0	25	10 15 20
	16	25	-0.013	28	10 15 20
	20	30	0	33	10 15 20 25
	25	35		38	10 15 20 25
	30	40	-0.016	43	20 25 30
	35	45	0	48	20 25 30
	40	52	0	55	20 25 30
	50	62	-0.019	65	20 25 30

Oil Free Ejector Guide Bushes

ปลอกนำอ็เจกเตอร์ไม่ใช้น้ำมัน (EGBZ)



Code	EGBZ
Material	Brass with graphite

Order Code d x L
EGBZ 25 x 38

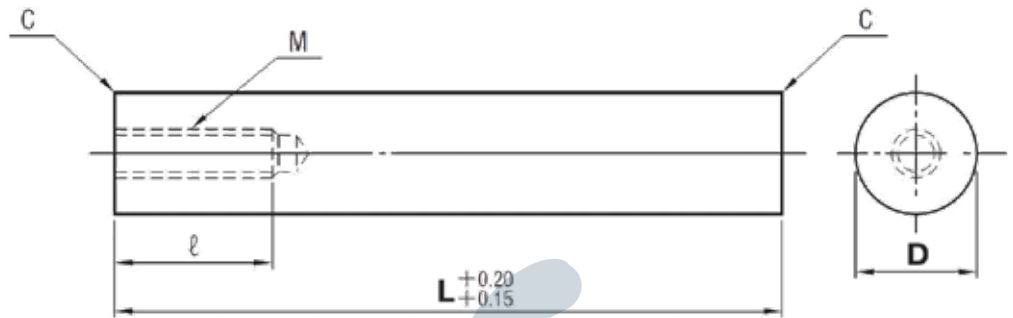
Code	dH7	Dh6	H	S	L	t	
EGBZ	13	+0.018	22	0	25	4	
	16	0	25		14		25
	20	+0.021	30	-0.013	19		33
					14		25
					19		33
					24		43
	25	0	35	0	14		25
					19		33
					24		38
					24		43 53
	30	+0.025	40	-0.016	19		33
					24		38
					29		53
					24		38
	35	0	45	0	29		53
					39		68
24					43		
29					53		
40	0	55	0	29	53		
				39	68		
				29	53		
				39	68		
50	0	65	-0.019	29	53		
				39	68		

Ejector Guide Pins

อีเจกเตอร์ไกด์พิน (EGH)

A

Standard Components
for Plastic Mold

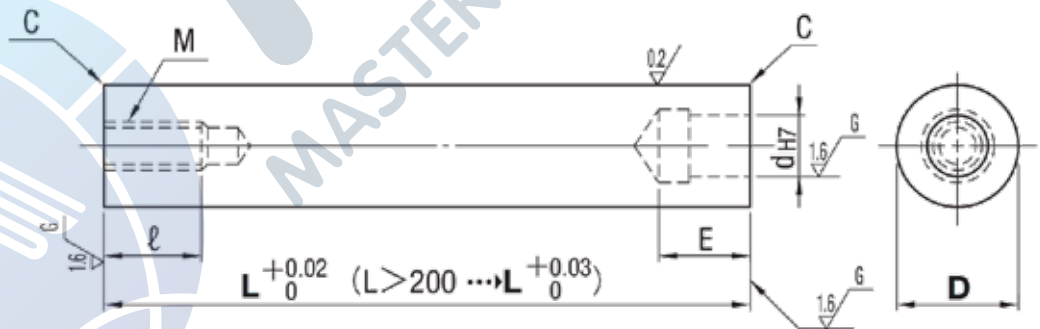


Code	EGH
Material	SUJ2
Hardness	58 HRC ~

Order Code D x L
EGH 25 x 100

Code	D	M x P	l	L	
EGH	12	M6 x 1.0	12	40 - 100	
	13			-0.020	40 - 150
	16			-0.025	40 - 150
	20	M8 x 1.25	16	40 - 175	
	25			50 - 250	
	30	M10 x 1.5	20	50 - 300	
	35			-0.025	50 - 300
	40			-0.030	50 - 350
	50			50 - 350	

Ejector Guide Pins อีเจกเตอร์ไกด์พิน (EGHC)



Code	EGHC
Material	SUJ2
Hardness	58 HRC ~

Order Code D x L
EGHC 25 x 100

Code	D	M x P	l	dH7	E	Dowel pins	L		
EGHC	12	M6 x 1.0	12	6	+0.012 0	15	MSTH 6-30	40 - 100	
	13							-0.020	40 - 150
	16							-0.025	40 - 150
	20	M8 x 1.25	16	8	+0.015 0	20	MSTH 8-40	50 - 175	
	25							50 - 250	
	30	M10 x 1.5	20	13	+0.018 0	25	MSTH 13-50	50 - 300	
	35							-0.025	50 - 300
	40							-0.030	50 - 350
	50							50 - 350	

Ejector Guide Pins

อีเจกเตอร์ไกด์พิน (EGPP)

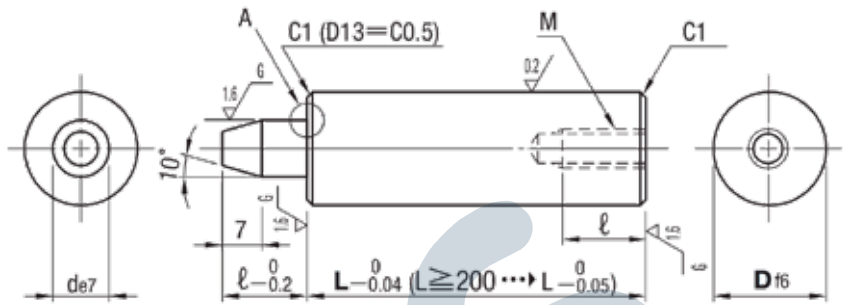
A

Standard Components
for Plastic Mold



Code	EGPP
Material	SUJ2
Hardness	58 HRC ~

Order Code D x L
EGPP 25 x 100



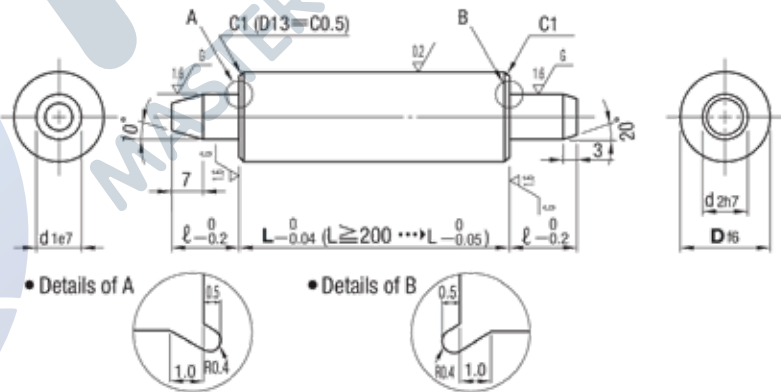
Code	Df6		de7		ℓ	L	M x P
EGPP	13	-0.016	8	-0.025	12	40 - 150	M6 x 1.0
	16	-0.027				50 - 150	
	20	-0.020	10	-0.040	15	50 - 150	M8 x 1.25
	25	-0.033				50 - 150	
	30	-0.025	20	-0.040	20	50 - 300	M10 x 1.5
	35	-0.025				50 - 300	
	40	-0.041				90 - 300	

Ejector Guide Pins อีเจกเตอร์ไกด์พิน (EGPD)



Code	EGPD
Material	SUJ2
Hardness	58 HRC ~

Order Code D x L
EGPD 25 x 100



Code	Df6		d1e7		d2h7		ℓ	L
EGPD	13	-0.016	8	-0.025	8	0	12	40 - 150
	16	-0.027						50 - 150
	20	-0.020	10	-0.040	10	-0.015	15	50 - 150
	25	-0.033						50 - 150
	30	-0.025	20	-0.040	20	0	20	50 - 300
	35	-0.025						50 - 300
	40	-0.025						90 - 300
	50	-0.041						90 - 300

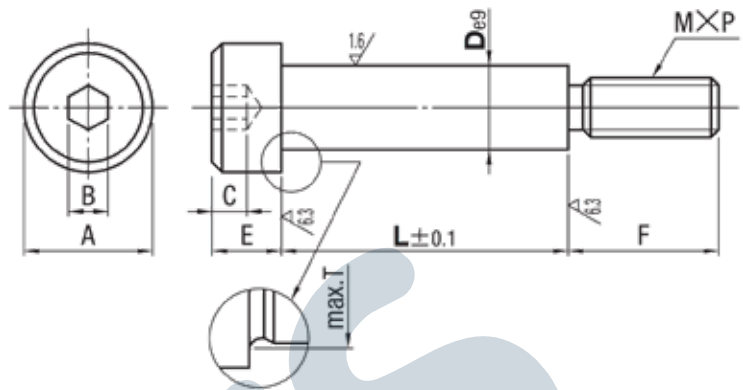
Bolts For Ejector Plate

สลักสำหรับชุดแผ่นเพลทเอ็กเจคเตอร์ (EPB)



Code	EPB
Material	SCM435
Hardness	30 - 35HRC
Surface	Black Oxide, head only

Order Code D x L
EPB 16 x 81



D	A	B	C	E	F	M x P	T
10	-0.025 -0.061	16	6	4	8	M8 x 1.25	10.8
13	-0.032	18	8	5	10	M10 x 1.5	14
16	-0.075	24	10	7	14	M12 x 1.75	17
20	-0.040	27	14	9	18	M16 x 2.0	21
25	-0.092	33	17	11	19	M20 x 2.5	26

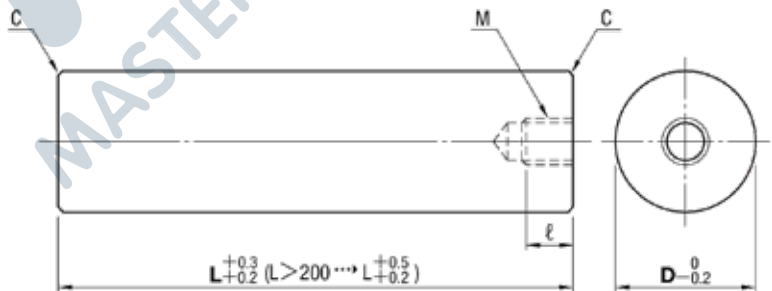
Code	D	L
EPB	10	31 36 41 46 51 56 61
	13	31 36 41 46 51 56 61 66 71
	16	51 56 61 66 71 76 81 91 101 111 121 131
	20	61 66 71 76 81 91 101 111 121 131 141
	25	121 131 141 151 161

Support Pillars เสาชัพพอร์ท (SPL)



Code	SPL
Material	S45C
Surface	Black Oxide

Order Code D x L
SPL 25 x 100



Code	D	L		C	M x P	e
		5mm increments	10mm increments			
SPL	12	40 - 55	60 - 100	0.3	M6 x 1.0	12
	14	40 - 55	60 - 120			
	16	40 - 55	60 - 120			
	18	40 - 55	60 - 120			
	20	45 - 55	60 - 150	0.5	M8 x 1.25	16
	25	45 - 55	60 - 150			
	30		50 - 300			
	35		50 - 300			
	40		50 - 300	0.8	M12 x 1.75	24
	45		50 - 200			
	50		50 - 400			
	55		50 - 200			
60		70 - 400	1.2	M16 x 2.0	32	
80		70 - 400				
100		100 - 200				
120		100 - 200				

Support Pins ซัพพอร์ตพิน (SPP)

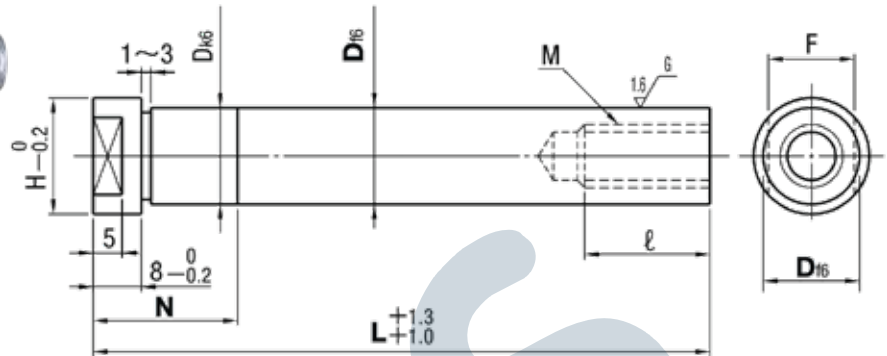
A

Standard Components
for Plastic Mold



Code	SPP
Material	SUJ2
Hardness	58 HRC ~

Order Code D x L x N
SPP 25 x 200 x N30



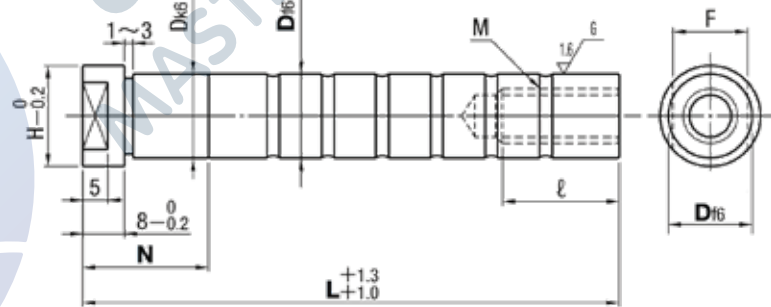
Code	Df6	Dk6	F	H	M x P	ℓ	L	N
SPP	13	-0.016	13	+0.012	M6 x 1.0	12	60 - 120	8 - 60
	16	-0.027	16	+0.001	M10 x 1.5	20	80 - 210	
	20	-0.020	20	+0.015	M12 x 1.75	24	90 - 300	
	25	-0.033	25	+0.002	M16 x 2.0	32	100 - 300	
	30	-0.025	30	+0.018			150 - 350	
	35	-0.041	35	+0.002			150 - 350	
	40	-0.016	40	+0.002			150 - 350	

Support Pins ซัพพอร์ตพิน (SPP-OC)



Code	SPP-OC
Material	SUJ2
Hardness	58 HRC ~

Order Code D x L x N
SPP-OC 25 x 200 x N40

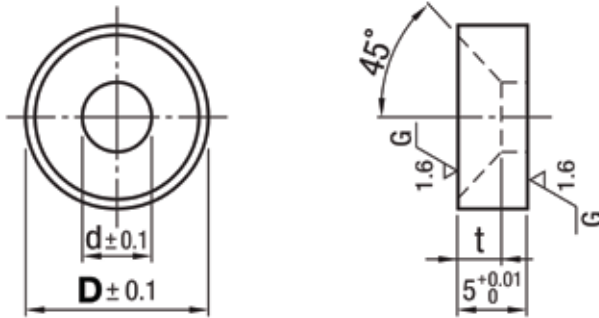


Code	Df6	Dk6	F	H	M x P	ℓ	L	N
SPP-OC	13	-0.016	13	+0.012	M6 x 1.0	12	60 - 120	8 - 30
	16	-0.027	16	+0.001	M10 x 1.5	20	80 - 210	
	20	-0.020	20	+0.015	M12 x 1.75	24	90 - 300	
	25	-0.033	25	+0.002	M16 x 2.0	32	100 - 300	8 - 40
	30	-0.025	30	+0.018			150 - 350	8 - 50
	35	-0.041	35	+0.002			150 - 350	8 - 60
	40	-0.016	40	+0.002			150 - 350	8 - 60

Stop Ring / Stop Pin

แหวนสต๊อป (STR) / สต๊อปพิน (STPN)

STR

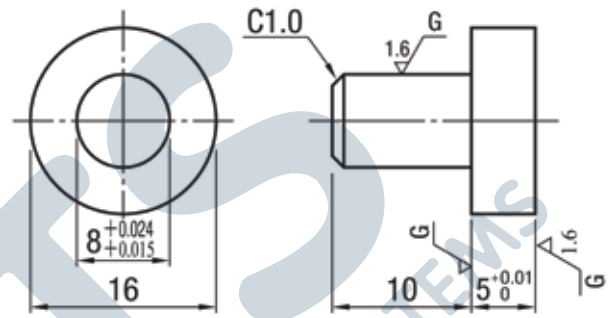


Code	D	d	t
STR	16	5.5	3
	20	6.5	3.5
	25	8.5	4.5

Code	STR
Material	S45C

Order Code D
STR 25

STPN

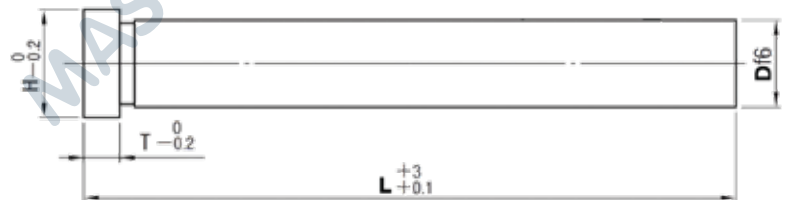


Code
STPN

Code	STPN
Material	S45C

Order Code
STPN

Return Pins เข็มกระตุกกลับ (RPH / RP8TH)



Code	Material	Hardness
RPH	S45C	58 HRC ~
RP8TH	SUJ2	58 HRC ~

Order Code D x L
RPH 25 x 200

Code	Df6		H	T	L									
RPH RP8TH	12	-0.016	17	8	60	80	100	150	200					
	15		-0.027		20	100	150	175	200	250	300	350	450	
	16	-0.020	21		100	150	175	200	250	300	350	450	500	
	20		25		100	150	200	250	300	350	450	500	550	
	25		30		100	150	200	250	300	350	450	500	550	
	30	-0.033	35		150	200	250	300	350	450	500	550		
	35		40		150	200	250	300	350	450	500	550		
	40	-0.025	45		200	250	300	350	450	500	550			
	50		-0.041		55	200	250	300	350	450	500	550		

Angular Pins แองกูล่าพิน (AP)

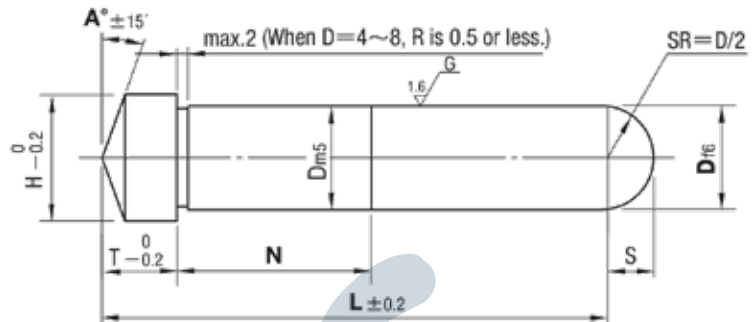
A

Standard Components
for Plastic Mold



Code	Dia	Material	Hardness
AP	8	SKD11	60 - 63 HRC
	10 - 50	SUJ2	58 HRC ~

Order Code D x L x N x A
AP 25 x 200 x N30 x A15



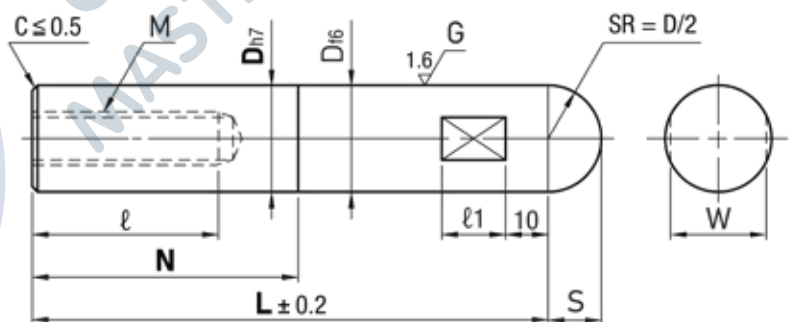
Code	D	m5	f6	T	H	S	L	N	A			
AP	8	+0.012	-0.013	5	11	4	15 - 130	กำหนดตามแบบลูกค้า	0 - 30			
	10	+0.006	-0.022									
	12	+0.015	-0.016	10	13	5	20 - 200					
	13											
	15	+0.007	-0.027	13	15	6	20 - 250					
	16											
	20	+0.017	-0.020	15	16	6.5	20 - 250					
	25											
	30	+0.008	-0.033	13	18	7.5	20 - 250					
	35											
	40	+0.020	-0.025	15	19	8	20 - 250					
	50											

Angular Pins แองกูล่าพิน (APU)



Code	APU
Material	SUJ2
Hardness	58 HRC ~

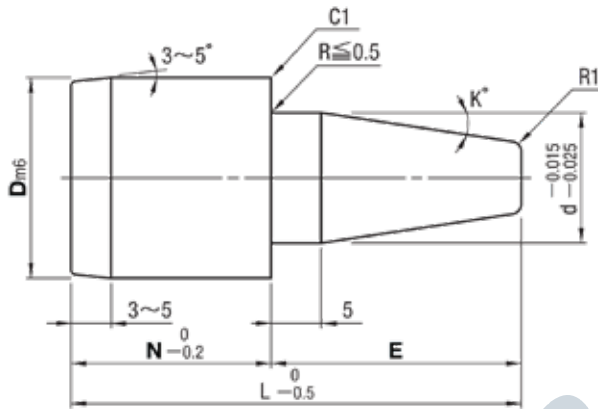
Order Code D x L x N
APU 25 x 200 x N50



Code	D	h7	f6	M	ℓ	S	ℓ1	W	L	N
APU	10	0	-0.013	6	15	5	8	7	30 - 200	L > N ≥ 0
		-0.015	-0.022							
	12	0	-0.016	8	20	6.5	10	10	35 - 250	
	13	-0.018	-0.027							
	16	0	-0.020	10	25	8	12	13	45 - 250	
	20									
	25	-0.021	-0.033	12	30	10	12	22	50 - 400	
	30									
	32	0	-0.025	16	40	18	18	27	60 - 400	
	35									
	40	-0.025	-0.041	20	40	15	18	36	60 - 450	

Leader Pins For Rubber Mold

สลักนำแม่พิมพ์ยาง (GMT)

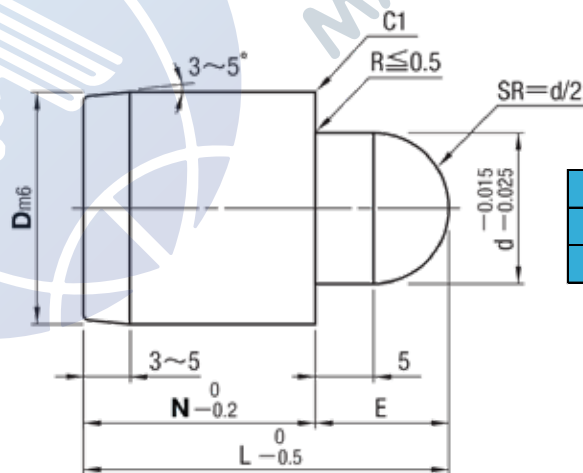


Code	GMT
Material	SUJ-2
Hardness	58 HRC ~

Order Code D x N x E
GMT 16 x 19 x 14

Code	Dm6	N	E	d	L	K°	
GMT	16	+0.018	14	14	10	28	10
		+0.007	19	14		33	10
				19		38	6
	20	+0.021 +0.008	14	14	13	28	10
				19		33	10
				24		38	7
			29	43		6	
			34	48		5	
			19	14		33	10
				19		38	10
				24		43	7
				29		48	6
				34		53	5

Leader Pins For Rubber Mold สลักนำแม่พิมพ์ยาง (GMR)



Code	GMR
Material	SUJ-2
Hardness	58 HRC ~

Order Code D x N
GMR 16 x 19

Code	Dm6	N	d	L	E	
GMR	16	+0.018 +0.007	19	10	29	10
	20	+0.021 +0.008		13	30	11

Leader Bushes For Rubber Mold

จลอกนำแม่พิมพ์ยาง (GMB)

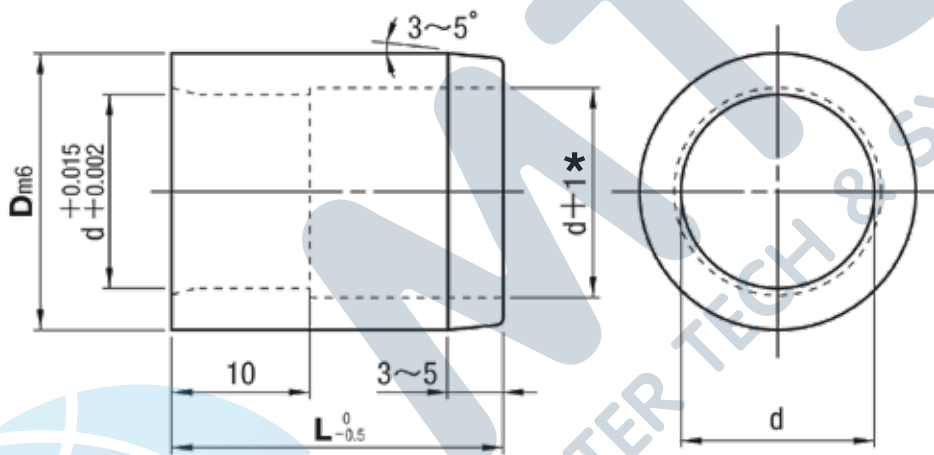
A

Standard Components
for Plastic Mold



Code	GMB
Material	SUJ-2
Hardness	58 HRC ~

Order Code D x L
GMB 16 x 19



* There is no (d+1) relief machining in the case of L=9

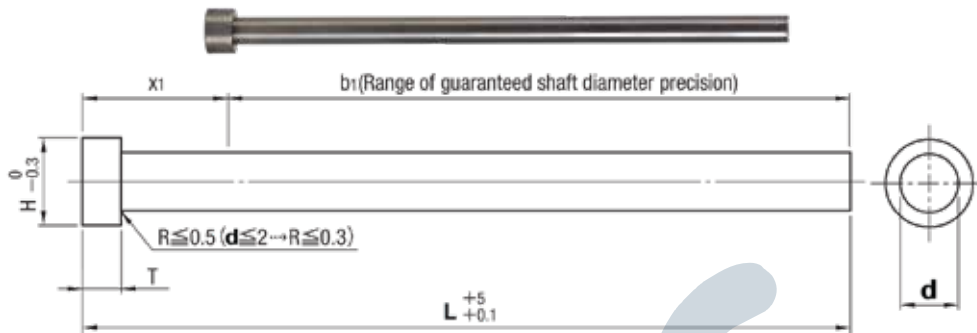
Code	Dm6	L	d
GMB	16	+0.018	10
		+0.007	
	20	+0.021	13
		+0.008	

Ejector Pins

เข็มนักะทุ้ง SKD61 (EPN / EPJ / EPS)

A

Standard Components
for Plastic Mold



Code	Head Thickness	T d	T T
EPN	4 mm (T4)	-0.01 -0.02	0 -0.02
EPJ	6 · 8 mm (JIS)		0 -0.05
EPS	Special		0 -0.02

Code	EPN / EPJ / EPS
Material	SKD61
Hardness	40 - 45 HRC / 900 HV ~

Order Code d x L
EPN 2 x 100

Code	EPN		EPJ		d	L
	4mm Head		JIS Head			
	H	T	H	T		
EPN	3	-	-	-	1	100 150 200 250
					1.1 1.2 1.3 1.4	100 150 200
					1.5	100 150 200 250
					1.6 1.7 1.8 1.9	100 150 200 250 300
					2	100 150 200 250 300 350 400
					2.1 2.2 2.3 2.4	100 150 200 250 300
					2.5	100 150 200 250 300 350 400
	4	-	-	-	2.6 2.7 2.8 2.9	100 150 200 250 300
					3	100 150 200 250 300 350 400 450 500
					3.1 3.2 3.3 3.4	100 150 200 250 300 350 400
					3.5	100 150 200 250 300 350 400 450 500
					3.6 3.7 3.8 3.9	100 150 200 250 300 350 400
					4	100 150 200 250 300 350 400 450 500 550 600 650 700
					4.1 4.2 4.3 4.4	100 150 200 250 300 350 400
	8	4	-	8	4.5	100 150 200 250 300 350 400 450 500 550 600 650 700
					4.6 4.7 4.8 4.9	100 150 200 250 300 350 400
					5	100 150 200 250 300 350 400 450 500 550 600 650 700
					5.1 5.2 5.3 5.4	100 150 200 250 300 350 400
					5.5	100 150 200 250 300 350 400 450 500 550 600 650 700
					5.6 5.7 5.8 5.9	100 150 200 250 300 350 400
					6	100 150 200 250 300 350 400 450 500 550 600 650 700 750 800
EPJ	-	-	6	6.1 6.2 6.3 6.4	100 150 200 250 300 350 400	
				6.5	100 150 200 250 300 350 400 450 500 550 600 650 700	
				7	100 150 200 250 300 350 400 450 500 550 600 650 700 750 800	
				8	100 150 200 250 300 350 400 450 500 550 600 650 700 750 800	
				9	100 150 200 250 300 350 400 450 500 550 600	
				10	100 150 200 250 300 350 400 450 500 550 600 650 700 750 800	
				11	100 150 200 250 300 350 400 450 500 550 600	
				12	100 150 200 250 300 350 400 450 500 550 600 650 700 750 800	
				13	100 150 200 250 300 350 400 450 500 550 600 650 700 750 800	
				14	100 150 200 250 300 350 400 450 500 550 600 650 700 750 800	
-	-	-	8	15	100 150 200 250 300 350 400 450 500 550 600 650 700 750 800	
				16	100 150 200 250 300 350 400 450 500 550 600	
				17	100 150 200 250 300 350 400 450 500 550 600 650 700 750 800	
				18	100 150 200 250 300 350 400 450 500 550 600 650 700 750 800	
				19	100 150 200 250 300 350 400 450 500 550 600 650 700 750 800	
				20	100 150 200 250 300 350 400 450 500 550 600 650 700 750 800	
				21	100 150 200 250 300 350 400 450 500 550 600 650 700 750 800	
				22	100 150 200 250 300 350 400 450 500 550 600 650 700 750 800	
				23	100 150 200 250 300 350 400 450 500 550 600 650 700 750 800	
				24	100 150 200 250 300 350 400 450 500 550 600 650 700 750 800	
-	-	-	-	25	150 200 250 300 350 400 450 500 550 600 650 700 750 800 900 1000	
				26	200 250 300 350 400 450 500 550 600 650 700 750 800 900 1000	
				27	200 250 300 350 400 450 500 550 600 650 700 750 800 900 1000	

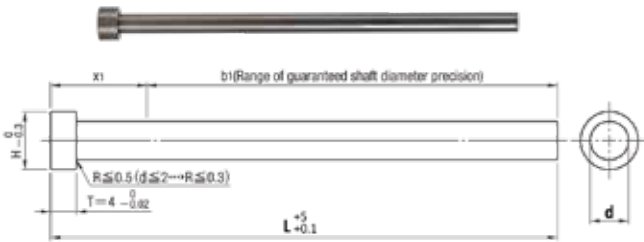
Code	EPS		d	L	
	Special Head				
	H	T			
EPS	4	6	1	100 150 200 250	
			1.1 1.2 1.3 1.4	100 150 200	
			1.5	100 150 200 250	
			1.6 1.7 1.8 1.9	100 150 200 250 300	
			2	100 150 200 250 300 350 400	
	5	6	4	2.1 2.2 2.3 2.4	100 150 200 250 300
				2.5	100 150 200 250 300 350 400

Ejector Pins

เข็มกระทุ้ง SKH51 (EPH / EPHE-B / EPHS)

A

Standard Components
for Plastic Mold



Code	Head thickness	T d
EPH	4mm (T4)	0 -0.005
EPHE-B		-0.01 -0.02
EPHS	Special	0 -0.005

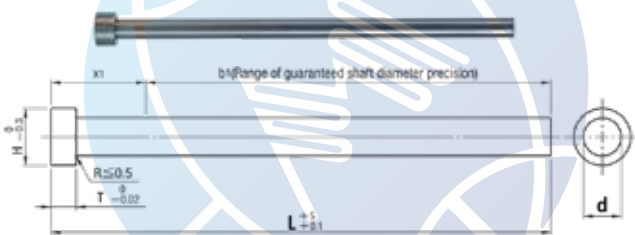
Code	EPH / EPHE-B / EPHS
Material	SKH51
Hardness	58 - 60 HRC

Order Code d x L
EPHJ 4 x 200

Code	H	T	d	L
EPH EPHE-B	3	4	0.8 0.9	100 150
			1 1.1 1.2 1.3 1.4	100 150 200
	1.5		100 150 200 250	
	4		1.6 1.7 1.8 1.9	100 150 200 250
			2	100 150 200 250 300
	5		2.1 2.2 2.3 2.4	100 150 200 250
			2.5	100 150 200 250 300
	6		2.6 2.7 2.8 2.9	100 150 200 250
			3	100 150 200 250 300 350
	7		3.1 3.2 3.3 3.4	100 150 200 250
			3.5	100 150 200 250 300 350
			3.6 3.7 3.8 3.9	100 150 200 250
			4	100 150 200 250 300 350

Code	H	T	d	L
EPHS	4	4	1	100 150 200
	6		2	100 150 200 250
			2.5	100 150 200 250

Ejector Pins เข็มกระทุ้ง SKH51 (EPHJ / EPHJE / EPHJS)



Code	Head thickness	T d
EPHJ	6 · 8mm (JIS)	0 -0.005
EPHJE		-0.01 -0.02

Code	EPHJ / EPHJE
Material	SKH51
Hardness	58 - 60 HRC

Order Code d x L
EPHJ 4 x 200

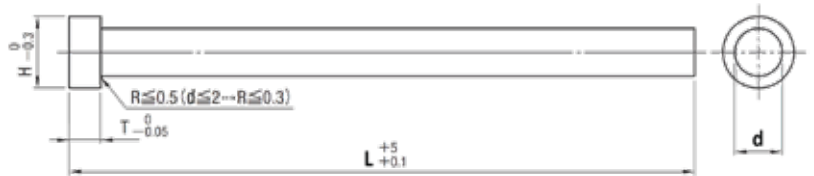
Code	H	T	d	L	
EPHJ EPHJE	8	6	4	100 150 200 250 300	
			4.5	100 150 200 250 300	
	9		5	100 150 200 250 300 350	
			5.5	100 150 200 250 300 350	
	10		6	100 150 200 250 300 350	
			6.5	100 150 200 250 300 350	
	11		7	100 150 200 250 300 350	
			13	8	8
	9				100 150 200 250 300 350
	10				100 150 200 250 300 350
	11				100 150 200 250 300 350
	12				100 150 200 250 300 350

Ejector Pins

ប៊ែមក្រះរ៉ុង SCM (EPCM)



Code	EPCM
Material	SACM 645
Inside Hardness	HRC 30 ± 2
Outside Hardness	HV 900 - 1100



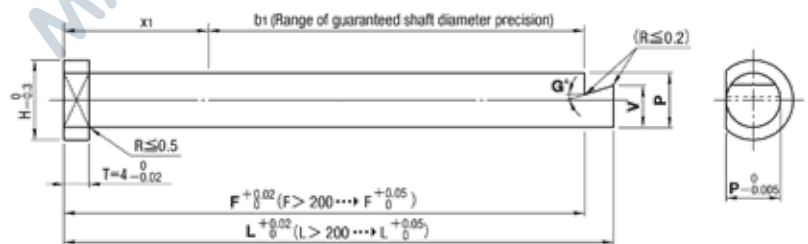
Order Code d x L
EPCM 1.5 x 150

Code	d	H	T	L
EPCM	1	3	4	100 150 200 250
	1.5	4		100 150 200 250
	2	5		100 150 200 250
	2.5	6		100 150 200 250
	3			100 150 200 250 300 350 400
	3.5	7		100 150 200 250 300 350 400
	4	8	100 150 200 250 300 350 400	
	4.5		100 150 200 250 300 350 400	
	5	9	100 150 200 250 300 350 400	
	5.5		100 150 200 250 300 350 400	
	6	10	100 150 200 250 300 350 400 500	
	7	11	100 150 200 250 300 350 400 500	
	8	13	8	100 150 200 250 300 350 400 500 600
	10	15		100 150 200 250 300 350 400 500 600
	12	17		100 150 200 250 300 350 400 500 600
	14	19		100 150 200 250 300 350 400 500 600
15	20	100 150 200 250 300 350 400 500 600		
16	21	100 150 200 250 300 350 400 500 600		

Ejector Pins ប៊ែមក្រះរ៉ុង (Z-EPH-L)



Code	Z-EPH-L
Material	SKH51
Hardness	58 - 60 HRC



Order Code P x L x V x G x F
Z-EPH-L 5 x 200.00 x V2.0 x G5 x F195.00

Code	Head thickness	T P	T G	T V
Z-EPH-L	4mm (T4)	0 -0.005	± 30'	± 0.05

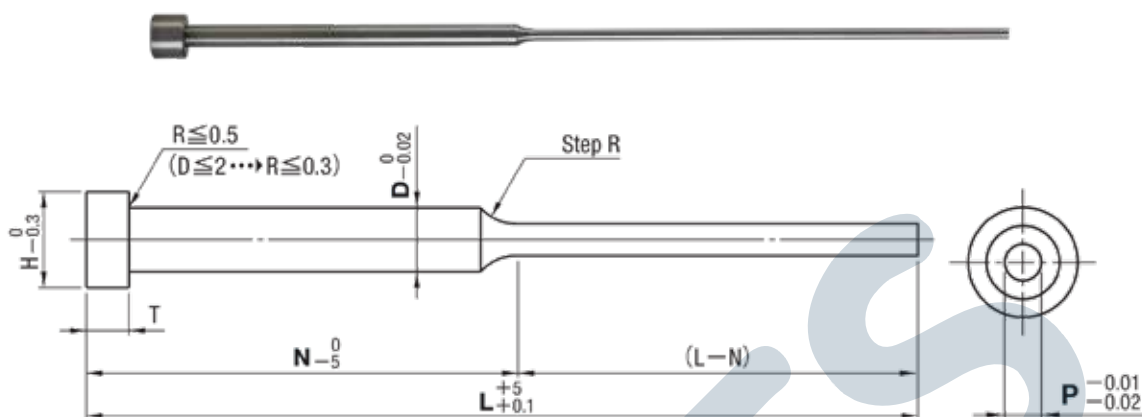
Code	H	T	P	L 0.01mm increments	V 0.5mm increments	G° 1° increments	F 0.01mm increments
Z-EPH-L	4	4	2	50.00 - 300.00	1.5 ≤ V < P	0 - 45	L - F ≤ 10
	5		2.5				
	6		3				
	7		4				
	8		5				
	9		6				
	10		7				
	11		8				

Step Ejector Pins

เข็มกระทุ้งสองตอน (ENS / EJS)

A

Standard Components
for Plastic Mold



Code	Head thickness	T
ENS	4mm (T4)	0 -0.02
EJS	6mm (JIS)	0 -0.05

Code	ENS / EJS
Material	SKD61
Hardness	40 - 45 HRC / 900 HV ~

Order Code D x L x P x N
ENS 2 x 200 x P1.0 x N100

Code	D	H	T	L	P	N
ENS	1.5	3	4	100	0.8 1.0	40 50 60 70
				150	0.8 1.0	40 50 60 70
	2	4		100	0.8 1.0 1.2 1.5	40 50 60 70
				150	0.8 1.0 1.2 1.5	40 50 60 70 80 90 100
				200	0.8 1.0 1.2 1.5	50 60 70 80 90 100 120
	2.5	5		100	1.0 1.2 1.5 1.8 2.0	50 60 70
				150	1.0 1.2 1.5 1.8 2.0	50 60 70
				200	1.0 1.2 1.5 1.8 2.0	50 60 70 80 90 100 120
	3	6		100	1.5 1.8 2.0 2.5	50 60 70
				150	1.5 1.8 2.0 2.5	50 60 70
				200	1.5 1.8 2.0 2.5	50 60 70 80 90 100 120
	EJS	4		8	150	
200			1.5 2.0 2.5 3.0		50 70 100 120	
250					100 120	
5		9	150		50 70	
			200	3.0 3.5 4.0	50 70 100 120	
			250		100 120	
6		10	150		50 70	
			200	4.0	50 70 100 120	
			250		100 120	

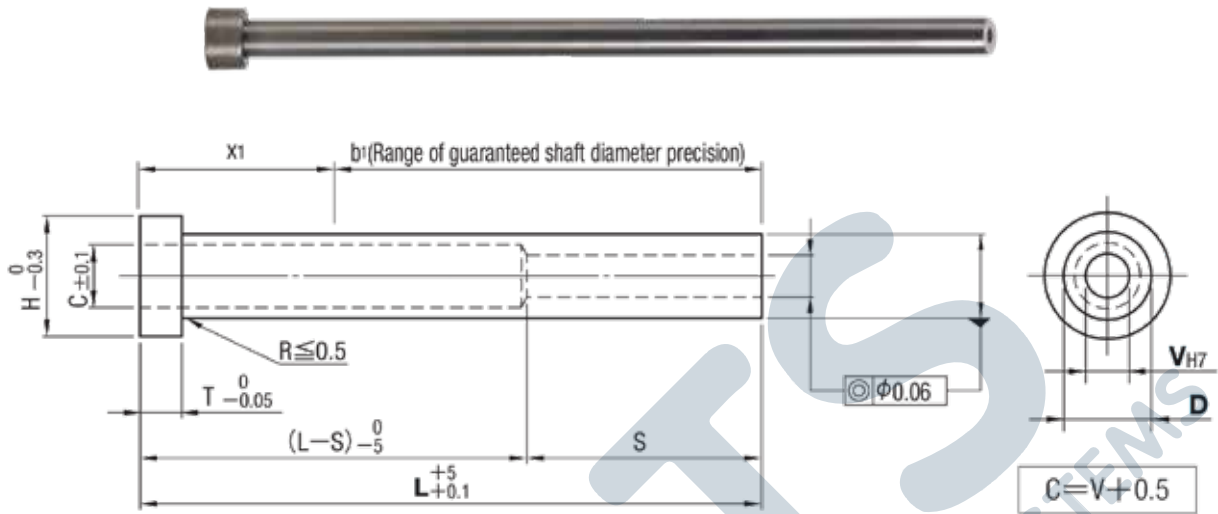
หมายเหตุ ลูกค้าสามารถสั่งทำขนาดอื่นๆ นอกเหนือจากในตารางได้

Sleeve Ejector Pins

ปลอกกระแทก (ESJ)

A

Standard Components
for Plastic Mold



Code	ESJ
Material	SKD61
Hardness	35 - 40 HRC / 900 HV ~

Order Code D x L x V
ESJ 6 x 100 x V4

∅D

D ≤ 12	D ≥ 15
-0.01	-0.01
-0.02	-0.03

∅V

V ≤ 3	3.5 ≤ V ≤ 6	6.5 ≤ V ≤ 10	V ≥ 12
+0.010	+0.012	+0.015	+0.018
0	0	0	0

Code	D	H	T	L	V
ESJ	4	8	6	100 120 140	1.5
				100 120 140 160 180 200	2 2.5
	4.5	9	6	100 120 140	1.5
				100 120 140 160 180 200	2 2.5
	5	9	6	100 120 140 160 180 200 225	2 2.5 3
				250 275 300	3
	5.5	9	6	100 120 140 160 180 200 225	2 2.5 3
				250 275 300	3
	6	10	6	100 120 140 160 180 200 225 250 275 300	2 2.5 3 3.5 4
				325 350 375 400 425 450	3 3.5
	6.5	10	6	100 120 140 160 180 200 225 250 275 300	2 2.5 3 3.5 4
				325 350 375 400 425 450	3 3.5 4
	7	11	6	100 120 140 160 180 200 225 250 275 300	2 2.5 3 3.5 4 4.5
				325 350 375 400 425 450	3 3.5 4 4.5
	7.5	12	6	100 120 140 160 180 200 225 250 275 300	3 3.5 4 4.5
				325 350 375	3.5 4 4.5
	8	13	8	100 120 140 160 180 200 225 250 275 300	2 2.5 3 3.5 4 4.5 5 5.5
				325 350 375 400 425 450	3 3.5 4 4.5 5
	9	14	8	475 500	5
				100 120 140 160 180 200 225 250 275 300	2 2.5 3 3.5 4 4.5 5 5.5
9	14	8	325 350 375 400 425 450	3 3.5 4 4.5 5	
			475 500	5 5.5 6	
10	15	8	100 120 140 160 180 200 225 250 275 300 325 350 375 400 425 450	4 4.5 5 6 6.5 7	
			475 500	5 5.5 6 6.5 7	
12	17	8	100 120 140 160 180 200 225 250 275 300 325 350 375 400 425 450	4 4.5 5 5.5 6 6.5 7 8 8.5	
			475 500	5 5.5 6 6.5 7 8	
15	20	8	200 225 250 275 300 325 350 375 400 425 450 475 500	9 10	
20	25	8	200 225 250 275 300 325 350 375 400 425 450 475 500	12 15	

L	100	120	140	160	180	200	225	250	275	300	325	350	375	400	425	450	475	500
S	50 (V1.5 → 40)			75			100			115			150					

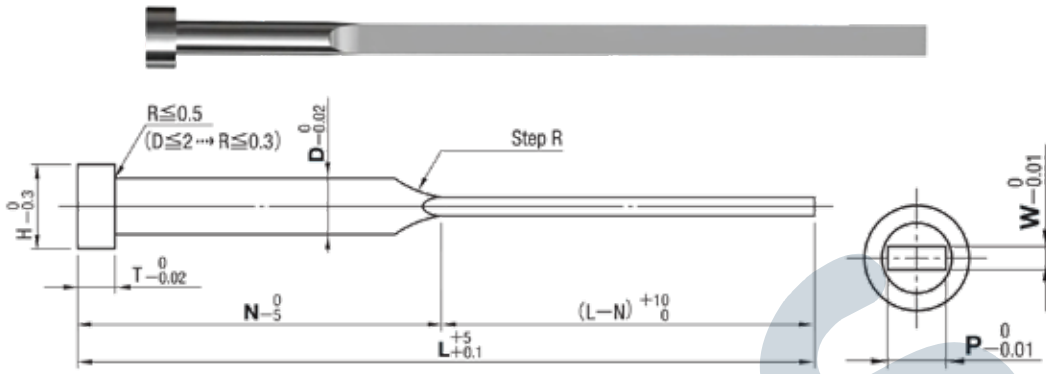
หมายเหตุ ลูกค้ำสามารถสั่งทำขนาดอื่นๆ นอกเหนือจากในตารางได้

Flat Ejector Pins

เข็มกระทุ้งแบบ SKH51 (ERPH / ERJ)

A

Standard Components
for Plastic Mold



Code	Head thickness	T, P, T, W	Code	ERPH / ERJ
ERPH	4mm (T4)	0	Material	SKH51
ERJ	6 • 8mm (JIS)	-0.01	Hardness	58 - 60 HRC

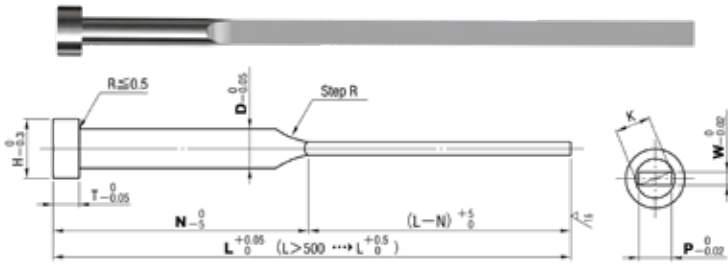
Order Code D x L x P x W x N
ERPH 2 x 150 x P1.0 x W0.8 x N50

Code	4mm head		JIS head		L	P	W			N		
	4mm head	JIS head	H	T			H	T				
ERPH	-	1.5	3	-	-	100	0.8 1.0 1.2	0.3 0.4 0.5 0.6			40 50 60 70 80	
						150		1.0 1.2 1.5				40 50 60 70 80
		2	4	-	-	100	1.5 2.0	0.4 0.5 0.6 0.7 0.8 1.0			40 50 60 70 80 90 100	
						150		1.0 1.2 1.5				40 50 60 70 80 90 100 120
						200		2.0 2.5				
		2.5	5	-	-	100	2.5 3.0	0.4 0.5 0.6 0.7 0.8 1.0 1.2 1.5 2.0			40 50 60 70 80 90 100 120	
	150					0.4 0.5 0.6 0.7 0.8 1.0 1.2 1.5 2.0						
	200					2.0 2.5						
	3	6	-	-	100	3.0 3.5	0.4 0.5 0.6 0.7 0.8 0.9 1.0 1.2 1.5 2.0			40 50 60 70 80 90 100 120		
					150		0.4 0.5 0.6 0.7 0.8 0.9 1.0 1.2 1.5 1.8 2.0 2.5					
					200		3.5 4.0					
	3.5	7	-	-	100	4.0	0.6 0.7 0.8 0.9 1.0 1.2 1.5 1.8 2.0 2.5			40 50 60 70 80 90 100 120		
					150		0.6 0.7 0.8 0.9 1.0 1.2 1.5 1.8 2.0 2.5					
					200		4.0					
	4	8	-	-	100	4.5 5.0	0.8 0.9 1.0 1.2 1.5 1.8 2.0 2.5			40 50 60 70 80 90 100 120		
					150		0.8 0.9 1.0 1.2 1.5 1.8 2.0 2.5					
					200		4.5 5.0					
	4.5	8	4	6	100	5.0	0.8 0.9 1.0 1.2 1.5 1.8 2.0 2.5			40 50 60 70 80 90 100 120		
					150		0.8 0.9 1.0 1.2 1.5 1.8 2.0					
					200		5.0					
	5	9	-	-	100	6.0	0.8 0.9 1.0 1.2 1.5 1.8 2.0 2.5			40 50 60 70 80 90 100 120		
					150		0.8 0.9 1.0 1.2 1.5 1.8 2.0 2.5					
					200		6.0					
	5.5	9	-	-	100	6.0	0.8 0.9 1.0 1.2 1.5 1.8 2.0 2.5			40 50 60 70 80 90 100 120 150 180 200		
150					0.8 0.9 1.0 1.2 1.5 1.8 2.0 2.5							
200					6.0							
6	10	-	-	100	6.0	0.8 0.9 1.0 1.2 1.5 1.8 2.0 2.5			40 50 60 70 80 90 100 120 150 180 200			
				150		0.8 0.9 1.0 1.2 1.5 1.8 2.0 2.5						
				200		6.0						
6.5	10	-	-	100	8.0	0.8 0.9 1.0 1.2 1.5 1.8 2.0 2.5			40 50 60 70 80 90 100 120 150 180 200			
				150		0.8 0.9 1.0 1.2 1.5 1.8 2.0 2.5						
				200		8.0						
7	11	-	-	100	8.0	0.8 0.9 1.0 1.2 1.5 1.8 2.0 2.5			40 50 60 70 80 90 100 120 150 180 200			
				150		0.8 0.9 1.0 1.2 1.5 1.8 2.0 2.5						
				200		8.0						
8	11	-	-	100	10.0	1.2 1.5 1.8 2.0 2.5			40 50 60 70 80 90 100 120 150 180 200			
				150		1.2 1.5 1.8 2.0 2.5						
				200		10.0						
10	15	-	-	100	10.0	1.2 1.5 1.8 2.0 2.5			40 50 60 70 80 90 100 120 150 180 200			
				150		1.2 1.5 1.8 2.0 2.5						
				200		10.0						
12	-	-	17	100	10.0	1.2 1.5 1.8 2.0 2.5			40 50 60 70 80 90 100 120 150 180 200			
				150		1.2 1.5 1.8 2.0 2.5						
				200		10.0						

หมายเหตุ ลูกค้าสามารถสั่งทำขนาดอื่นๆ นอกเหนือจากในตารางได้

Flat Ejector Pins

เข็มกระทุ้งแบบ SKD61 (ERNX)



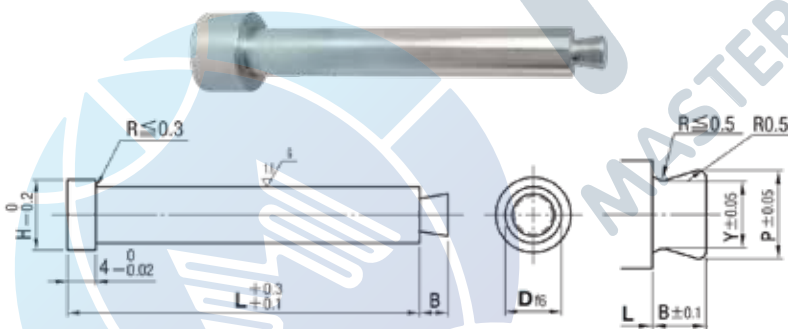
Code	ERNX
Material	SKD61
Hardness	40 - 45 HRC / 900 HV ~

Order Code D x L x P x W x N
ERNX 12 x 400 x P10.0 x W2.5 x N200

Code	D	H	T	0.01mm increments			N
				L	P	W	
ERNX	4	8	6	200.00 - 350.00	2.00 - 3.70	1.00 ~	N ≥ 40 and (L - N) ≤ 200 • D6 - 8 : N ≥ 45 • D10 - 16 : N ≥ 50 • D20 - 25 : N ≥ 55 and N ≥ L/3 350 ≥ (L/N) ≥ 10
	5	9			2.50 - 4.70	1.00 ~	
	6	10			3.00 - 5.50	2.00 ~	
	7	11			3.30 - 6.60	2.00 ~	
	8	13	8	200.00 - 500.00	3.30 - 7.60	2.00 ~	
	10	15			5.00 - 9.60	2.00 ~	
	12	17			6.00 - 11.70	2.00 ~	
	13	18			6.00 - 12.70	2.00 ~	
	15	20			8.00 - 14.70	2.00 ~	
	16	21			8.00 - 15.70	2.00 ~	
	20	25	200.00 - 500.00	200.00 - 500.00	10.00 - 19.70	2.00 ~	
	25	30			13.00 - 24.70	2.50 ~	

หมายเหตุ ลูกค้สามารถสั่งทำขนาดอื่นๆ นอกเหนือจากในตารางได้

Runner Lock Pins สลักล็อกรันเนอร์ (RLR / RLRL)



Code	RLR / RLRL
Material	SKH51
Hardness	58 - 60 HRC

Order Code D x L
RLR 2 x 40

Code	D	H	B	P	Y	L										
RLR	2	4	2	1.5	1.0	15	20	25	30	35	40					
	3	5		2.3	1.8	15	20	25	30	35	40	45	50	60		
	4	6	2.5	2.8	2.3	20	25	30	35	40	45	50	60	70	80	
	5	7	3	3.3	2.8	20	25	30	35	40	45	50	60	70	80	
	6	8		3.8	3.0	30	35	40	45	50	60	70	80			
	8	10	4	5.8	5.0	30	35	40	45	50	60	70	80			

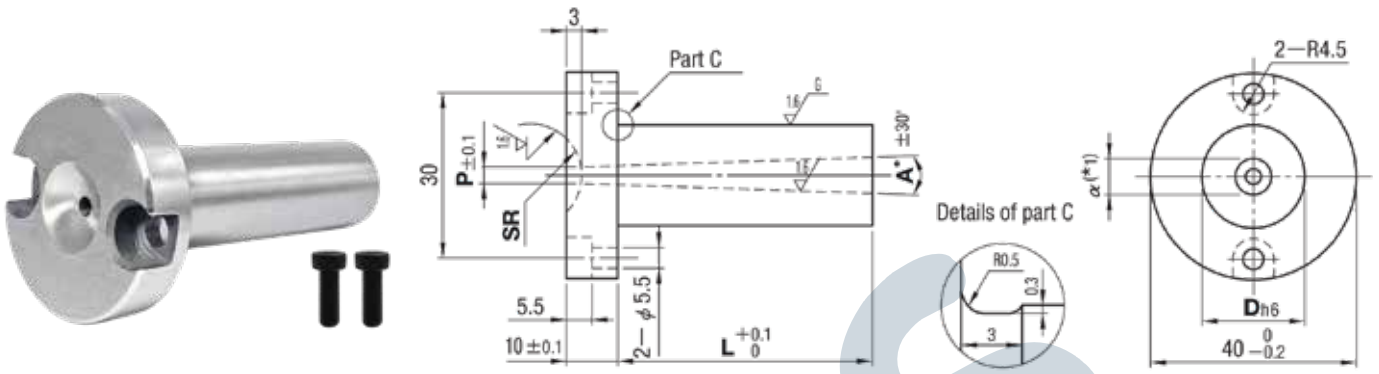
Code	D	H	B	P	Y	L
RLRL	2	4	2	1.5	1.0	10.0 - 100.0
	2.5	5		2.0	1.5	
	3	5	2.3	1.8		
	4	6	2.5	2.8	2.3	
	5	7	3	3.3	2.8	
	6	8		3.8	3.0	
8	10	4	5.8	5.0	15.0 - 100.0	

Sprue Bushes

หัวฉีด (SBBP / SBBK / SBBS / SBGP / SBGK / SBGS)

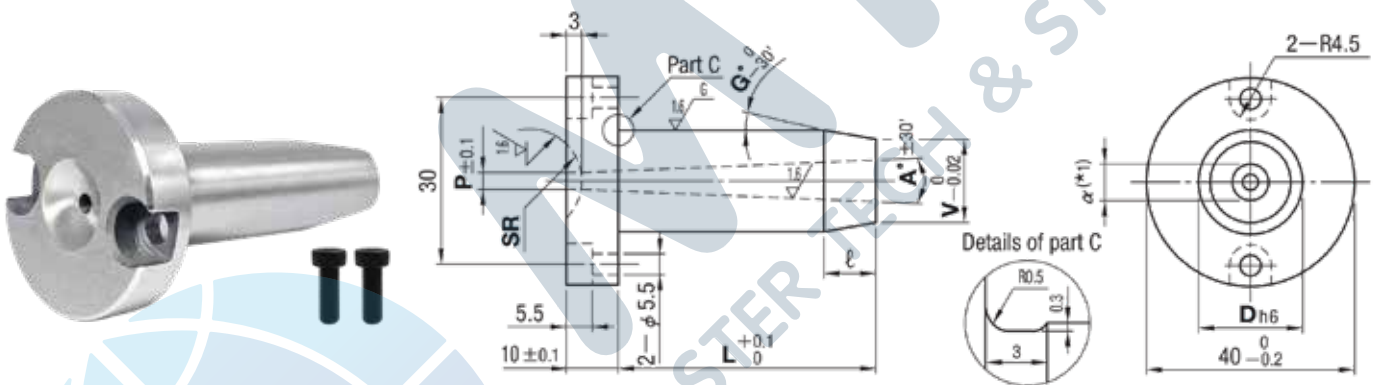
A

Standard Components
for Plastic Mold



Code	Material	Hardness
SBBP	HPM1	37 - 43 HRC
SBBK	SKD61	48 - 52 HRC
SBBS	DC53	58 - 62 HRC

Order Code D x L x SR x P x A
SBBP 20 x 80.0 x SR16 x P3 x A2



Code	Material	Hardness
SBGP	HPM1	37 - 43 HRC
SBGK	SKD61	48 - 52 HRC
SBGS	DC53	58 - 62 HRC

Order Code D x L x SR x P x A x V x G
SBGP 16 x 90.0 x SR12 x P3 x A2 x V14 x G5

Code	Dh6	L	SR	P	A°	V	G°
SBBP SBBK SBBS	8 0 -0.009	0 - 80.0	0	2	0.5 - 3 (*)	D > V ≥ α + 2	1 - 10
			10.5	2.5			
			11	3			
			0	3.5			
SBGP SBGK SBGS	10 0 -0.011	0 - 120.0	0	2 (*)	0.5 - 4 (*)	D > V ≥ α + 2	1 - 10
			10.5	2.5 (*)			
			11	3 (*)			
			12	3.5			
SBGP SBGK SBGS	13 0 -0.011	0 - 150.0	12	4	0.5 - 4 (*)	D > V ≥ α + 2	1 - 10
			13	4.5			
			16	5			
			16	5.5			
SBGP SBGK SBGS	20 0 -0.013	0 - 200.0	16	6	0.5 - 4 (*)	D > V ≥ α + 2	1 - 10
			16	6.5			
			20	7			
			20	8			

(*) L Dimension Limits

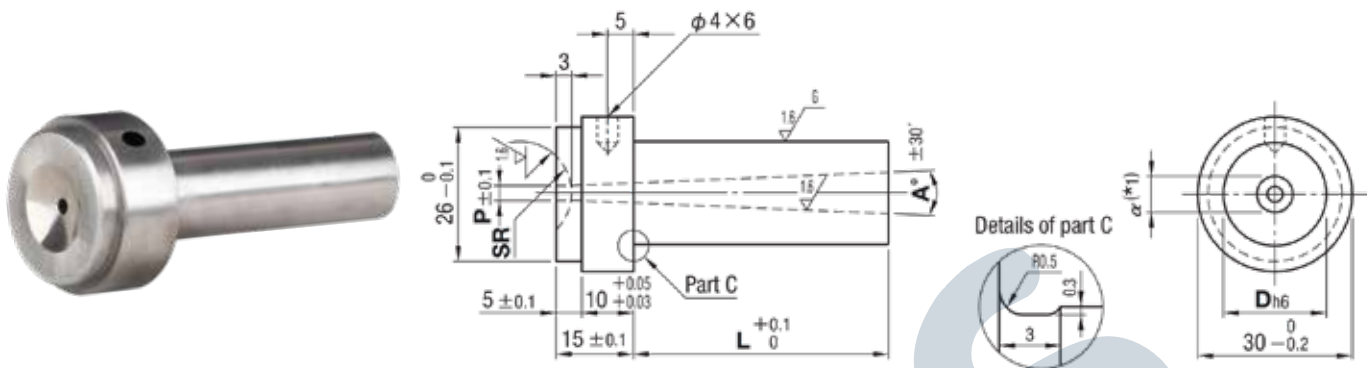
P	2		2.5		3		3.5 - 4.5	
A	0.5	1	1.5 - 4.0	0.5	1	1.5 - 4.0	0.5	1 - 1.5
L Dimension Limits	30	50	85	45	50	85	60	150

Sprue Bushes

หัวฉีด (SBSM / SBSD / SBSS / SBTM / SBTD / SBTS)

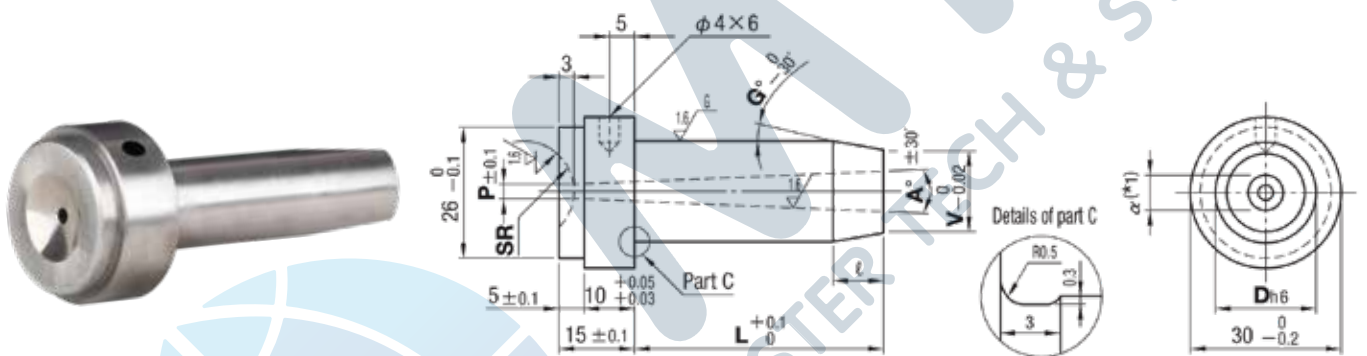
A

Standard Components
for Plastic Mold



Code	Material	Hardness
SBSM	HPM1	37 - 43 HRC
SBSD	SKD61	48 - 52 HRC
SBSS	DC53	58 - 62 HRC

Order Code D x L x SR x P x A
 SBSD 20 x 50.0 x SR20 x P4 x A2



Code	Material	Hardness
SBTM	HPM1	37 - 43 HRC
SBTD	SKD61	48 - 52 HRC
SBTS	DC53	58 - 62 HRC

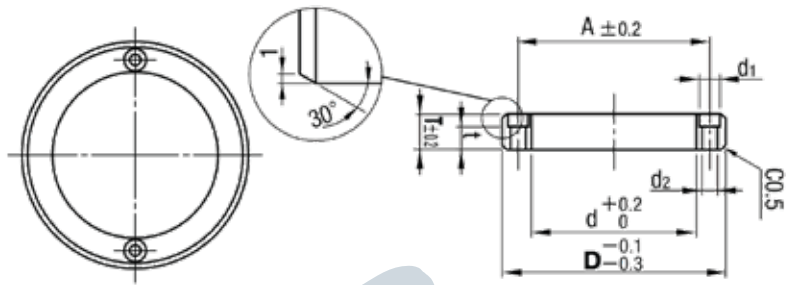
Order Code D x L x SR x P x A x V x G
 SBTD 25 x 60.0 x SR21 x P5 x A3 x V20.0 x G5

Code	Dh6	L	SR	P	A°	V	G°
SBSM	8 0 -0.009	0 - 80.0	0	2	0.5 - 3 (*)	D > V ≥ α + 2	1 - 10
			10.5	2.5			
			11	3			
SBSD	10	0 - 120.0	0	2 (*)	0.5 - 4 (*)		
10.5			2.5 (*)				
SBSS	12	0 - 150.0	11	3 (*)			
11			3.5				
SBTM	13	0 - 150.0	12	4			
12			4.5				
SBTD	16	0 - 200.0	13	5			
13			5.5				
SBTS	20	0 - 200.0	16	6			
16			6.5				
17			7				
	25	0 - 200.0	20	7			
20			8				

(*) L Dimension Limits

P	2		2.5		3		3.5 - 4.5	
A	0.5	1	1.5 - 4.0	0.5	1	1.5 - 4.0	0.5	1 - 1.5
L Dimension Limits	30	50	85	45	50	85	60	150

Locating Rings แควนร่องหัวฉีด (LRA / LRBS)



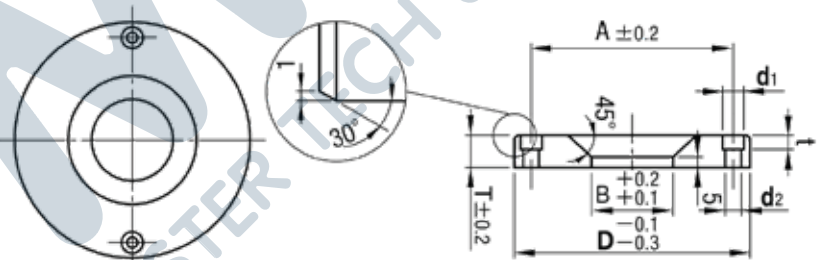
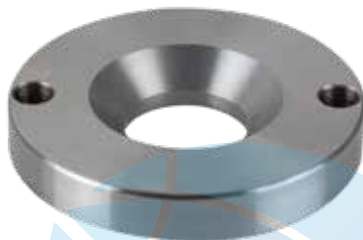
Code	LRA / LRBS
Material	S45C

Code	D	d	A	d1	d2	t	T
LRA	100	70	85	11	6.5	8	15
	120	90	105				

Order Code D
 LRA 100
 D x T
 LRBS 100 x 15

Code	D	T			d	A	d1	d2	t	Bolts	
LRBS	60	10	15	20	25	40	50	9	5.5	5	M5
		10	15	20	25					70	
	100	10	15	20	25	90	105	11	6.5	8	
		10	15	20	25					3	
120	150	15	20	25	110	130	14	9	6	3	M6
		15	20	25						8	

Locating Rings แควนร่องหัวฉีด (LRB / LRJS)



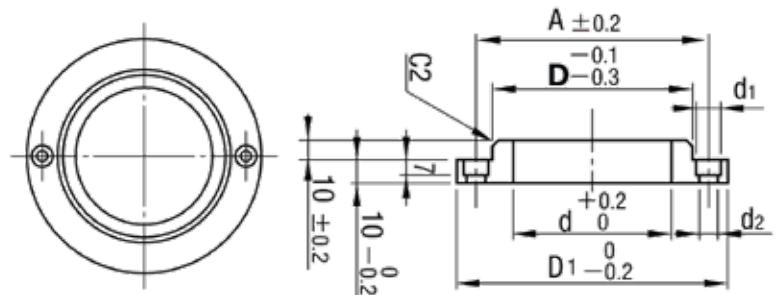
Code	LRB / LRJS
Material	S45C

Code	D	T	B	A	d1	d2	t	Bolts
LRB	100	15	36	85	11	6.5	6.5	M6
	120							

Order Code D x T x B
 LRB 100 x 15 x 36

Code	D	T			B	A	d1	d2	t	Bolts		
LRJS	100	15	20	25	35	40	50	85	11	6.5	6.5	M6
		15	20	35	40	50						
	150	15	20	35	40	50	100	14	9	8.6	M8	

Locating Rings แควนร่องหัวฉีด (LRK)



Code	LRK
Material	S45C

Code	D	Applicable bolts	Bolt hole		D1	d	A
			d2	d1			
LRK	100	M 6	6.5	11	130	85	115
	120				150	105	135

Order Code D
 LRK 100

Plain Guide Rails ไถ้ดิส (GRS / GRSM)

A

Standard Components
for Plastic Mold

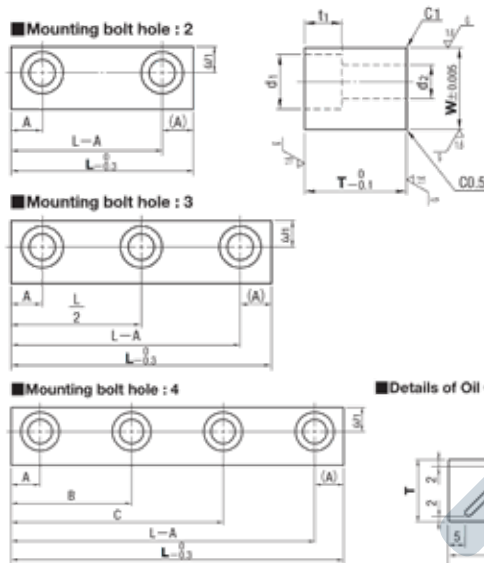


Table for Bolt Hole Size

W	T	d1	d2	t1	ω1
10	5	8	4.5	3.5	4.5
	10 15			5	
12.5	5	8	4.5	3.5	5
	10 15 20			5	
15	5	8	4.5	3.5	6
	10 15 20 25			6	
20	15 20	11	6.5	7	9
	25 30			9	
25	20 25 30 35	14	9	9	10
30	30 35	17	11.5	11	11

Oil Groove Pitch

T	P
10	8
15	18
20	28
25	38
30	48
35	58

Code	GRS (Non-oil groove) GRSM (Oil groove)
Material	SKS3
Hardness	53 - 56 HRC

Order Code W x T x L
GRS 15 x 20 x 80

Code	W	T	L	No. of bolt holes	A	B	C			
GRS (Non-oil groove)	10	(5)	30 35 40	2	7.5	-	-			
			50 60	3						
		10	35 40	2						
			50 60 70	3						
		15	80	4				90	30	50
			100					32.5	57.5	
	12.5	(5)	30 35 40	2	7.5	-	-			
			50 60	3						
		10	35	2						
			40	3				50 60 70	30	50
		15	80					4	90	32.5
			100	35					65	
GRSM (Oil groove)	15	(5)	40 50 60	2	7.5	-	-			
			40 50 60	2						
		10	70 80 90 100 110 120	3						
			130	4				40	90	
		15	140					4	45	95
			150	53					97	
20	15	40 50 60 70 80 90	2	10	-	-				
		100 110 120 130 140 150	3							
	20	160	4				55	105		
		180					60	120		
	25	200	4				70	130		
		40 50 60 70 80 90					2	-	-	
25	20	100 110 120 130 140 150	3	10	-	-				
		160	4				55	105		
	25	180					4	60	120	
		200	70					130		
	GRSM (Oil groove)	35	120 130 140 150				3	12	-	-
			160				4			
180			60	120						
30		200	4	70	130					
		120 130 140 150		3	-	-				
		160		4	60	120				
180	70	130								

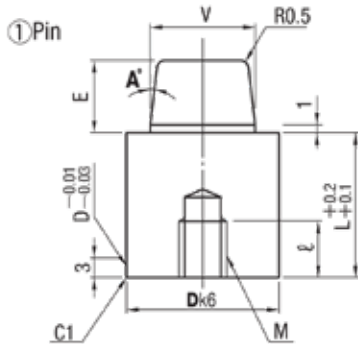
หมายเหตุ (5) มีเฉพาะรหัส GRS

Taper Pins

แทปเปอร์พิน (TPN / TPNV)

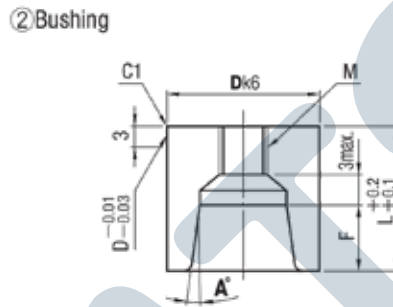
A

Standard Components
for Plastic Mold



Code	TPN
Material	SKD11
Hardness	58 - 62 HRC
Concentricity	Match mark type

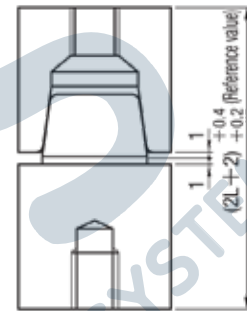
Order Code D x A
TPN 25 x 5



Code	TPNV
Material	SKD11
Hardness	58 - 62 HRC
Concentricity	0.01 or less

Order Code D x A
TPNV 20 x 3

● Dimensions when combined



Code	Dk6		A°
TPN	13	+0.012	1 3 5 10
	16	+0.001	
	20	+0.015	
	25	+0.002	
	30	+0.018	
	32	+0.002	
	35	+0.018	
	42	+0.002	

Code	Dk6		A°
TPNV	10	+0.010	1 3 5
		+0.001	
	13	+0.012	
	16	+0.001	
	20	+0.015	
	25	+0.002	
	30	+0.018	
	35	+0.002	

D	L	V	E	F	① Pin		② Setting tap for bushing
					M	ℓ	
10	14	7	6	5	M 4	10	M 4
13	14	7	6	5	M 4	10	M 4
16	14	10	6	5	M 5	10	M 5
20	19	13	9	8	M 6	12	M 6
25	24	16	12	11	M 8	16	M 8
30	29	20	15	14	M 10	20	M 10
32	29	20	15	14	M 10	20	M 10
35	34	24	18	17	M 12	24	M 12
42	39	30	24	23	M 12	24	M 12

Puller Bolts พูลเลอร์โบลท์ (PBTN)

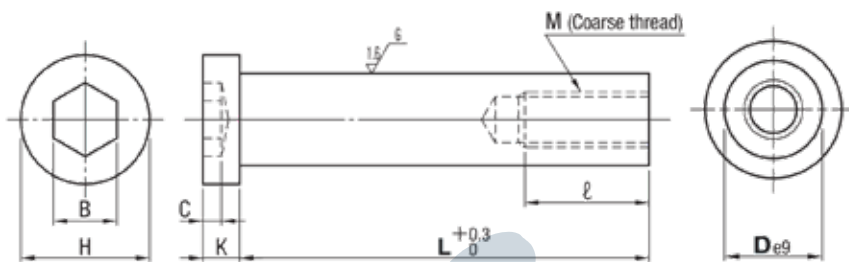
A

Standard Components
for Plastic Mold



Code	PBTN
Material	SCM440
Hardness	33 - 38 HRC

Order Code D x L
PBTN 25 x 200



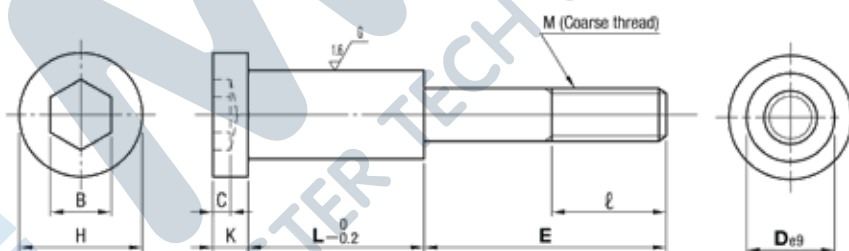
Code	De9	H	K	C	B	M	ℓ	L 10mm increments	
PBTN	10	-0.025 -0.061	16	8	4	6	M 6	17	40 - 180
	13	-0.032	18	8	4	8	M 8	20	60 - 280
	16	-0.075	24	13	7	10	M 10	23	100 - 300
	20	-0.040	27	13	9	14	M 12	26	120 - 400
	25	-0.092	33	18	10	17	M 16	32	170 - 400

Stop Bolts สตั๊ปโบลท์ (STBG)



Code	STBG
Material	SCM440
Hardness	33 - 38 HRC

Order Code D x L x E
STBG 16 x 20 x 30



Code	De9	H	K	C	B	M	ℓ	L	E	
STBG	10	-0.025 -0.061	16	8	4	6	M 6	17	10	19 24
									15	19 24 29
									20	19 24 29 34
	13	-0.032 -0.075	18	8	4	8	M 8	20	10	22 27
									15	22 27 32 37
									20	22 27 32 37 42
									25	27 32 37 42
									30	27 32 37 42 47
	16	-0.040 -0.092	24	13	7	10	M 10	23	10	30 35
									15	30 35 40
									20	30 35 40 45
									25	30 35 40 45 50
									30	35 40 45 50 55
	20	-0.040 -0.092	27	13	9	14	M 12	26	15	38 43
									20	38 43 48
									25	38 43 48 53
									30	48 53 58
									35	48 53 58
	25	-0.040 -0.092	33	18	10	17	M 16	32	45	53 58
									15	44 49
20									49 54 59	
25									49 54 59	
30									49 54 59 64	
40	54 59 64 69									

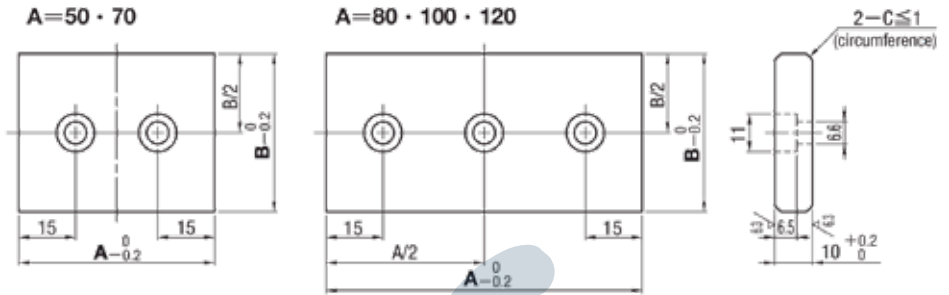
Slide Adjustment Plates

แผ่นเลื่อนปรับสไลด์ (SAS / SASM / SAPZ)

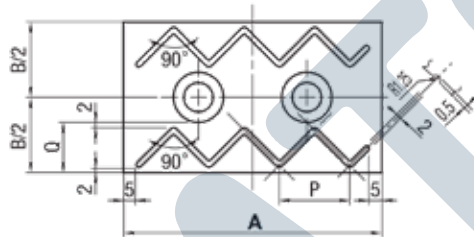
A

Standard Components
for Plastic Mold

SAS



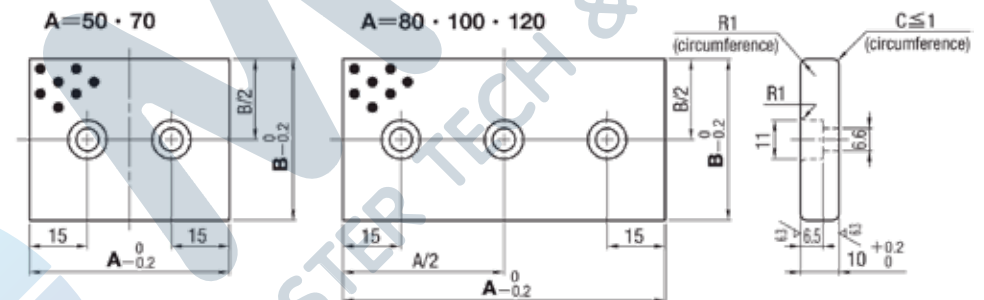
SASM



Oil Groove Pitch

B	Q	P
30	9.5	7
40	14.5	17
50	19.5	27
60	24.5	37

SAPZ



Code	Material	Hardness
SAS (Non-oil groove)	SKS3	53 - 56 HRC
SASM (Oil groove)	SKS3	53 - 56 HRC
SAPZ (Oil free)	Brass with graphite	-

Order Code A x B
SAPZ 50 x 30

Code	A	B
SAS (Non-oil groove)	50	30
		40
SASM (Oil groove)	70	30
		40
		50
SAPZ (Oil free)	80	30
		40
		50
SAPZ (Oil free)	100	40
		50
		60
SAPZ (Oil free)	120	40
		50
		60

Oil Free Slide Units

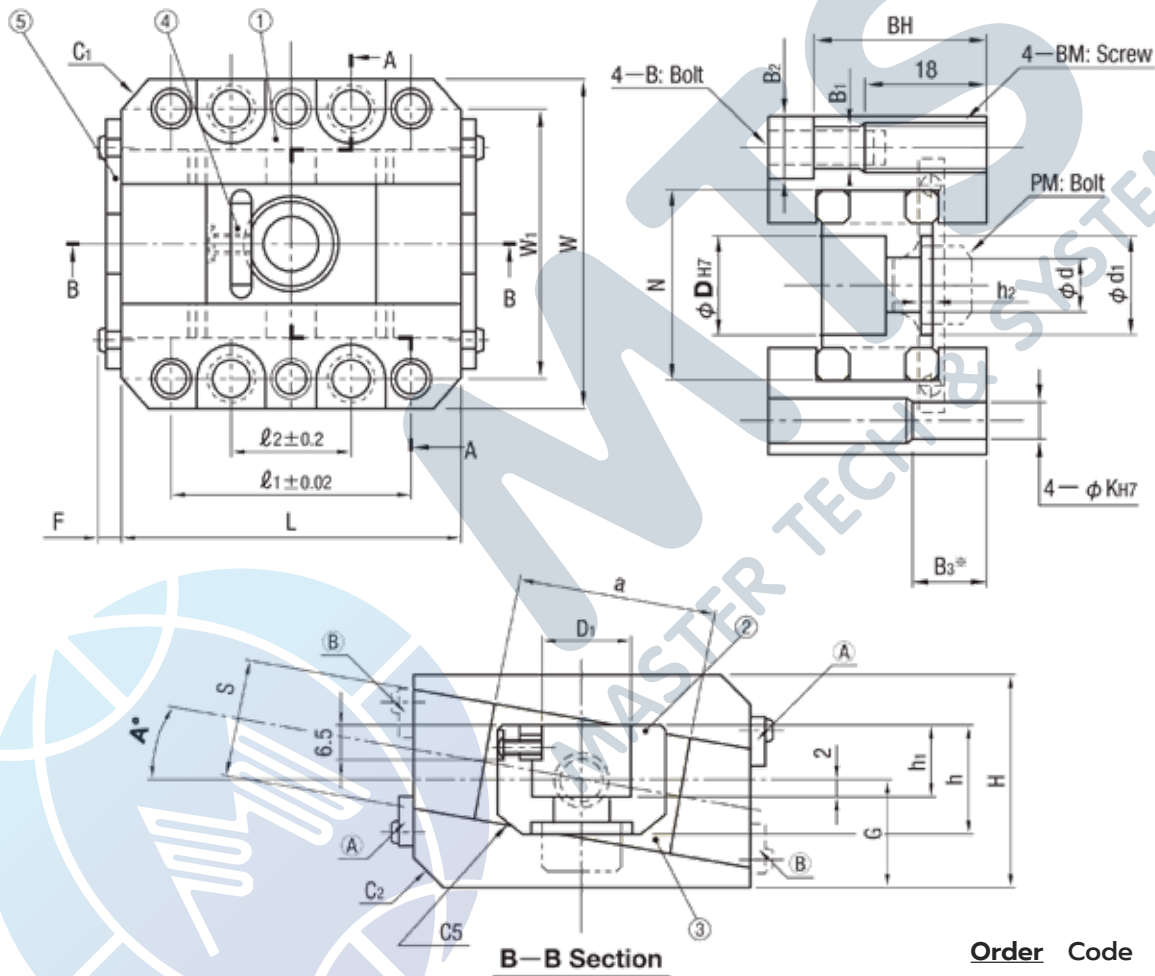
ชุดสไลด์ออฟฟรี (SCZN)

A

Standard Components
for Plastic Mold



Item	Components	Material	Pcs
①	Slide base	S55C	2
②	Inclined pin holder	SCM440	1
③	Slide plate	Brass + Graphite	2
④	Parallel Key	S45C	1
⑤	Stopper	SS400	2



Order Code D - A
SCZN 16 - 0

Code	D	A°	Slide base					Inclined pin holder							Slide plate		G	F
			W	L	H	C ₁	C ₂	D ₁	d	d ₁	h	h ₁	h ₂	N	S	a		
SCZN	12	0 - 10	56	55	35	5	-	11	5.5	-	16	10	-	30	20	35	17.5	4.65
	16		60	65	36	6	-	15	9	16	18	11	3	33	20	40	18	4.65
	20		68	70	43	6	5	18	11	20	22	13	5.5	38	24	40	21.5	4.65
	25		75	80	45	6	5	22	11	20	26	15	5.5	45	26	45	22.5	4.65
	30		81	95	54	6	5	27.5	11	20	30	17	3.5	51	30	55	27	4.65

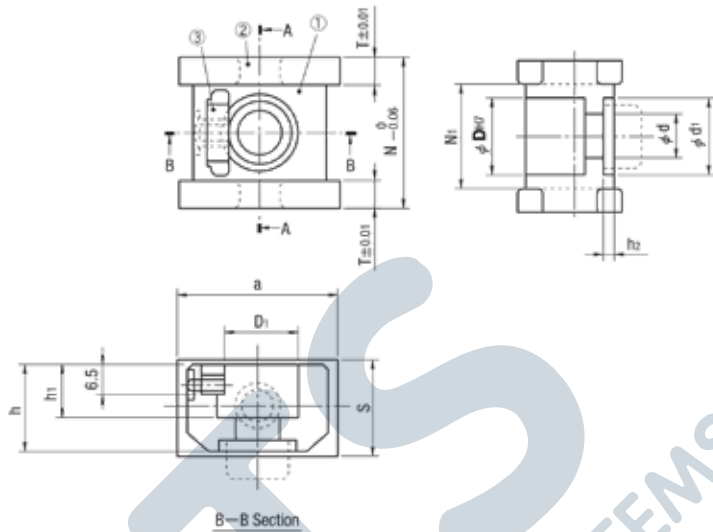
D	Bolt hole dimensions							Mounting position of stopper			
	ℓ_1	ℓ_2	W ₁	B ₁	B ₂	B ₃	BM	BH	K	(A)	(B)
12	42	21	45	6.6	11	15	M 8	28.5	6	0° - 10°	-
16	46	25	48	6.6	11		M 8	29.5	6	0° - 10°	-
20	50	25	55	8.6	13.5	20	M 10	34.5	8	4° - 10°	0° - 3°
25	60	35	62	8.6	13.5		M 10	36.5	8	4° - 10°	0° - 3°
30	75	50	68	8.6	13.5		M 10	45.5	8	0° - 10°	-

Oil Free Inclined Pin Holders

ชุดสไลด์ยึดพินเอียงงออยฟรี (SCZNP)



Order Code D
SCZNP 16



Item	Components	Material	Pcs
①	Inclined pin holder	SCM440	1
②	Slide plate	Brass + Graphite	2
③	Key	S45C	1

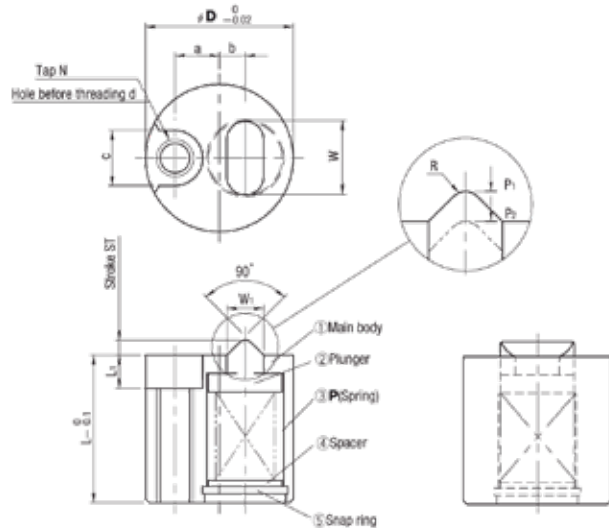
Code	D	① Inclined pin holder Common with SCZN ② Inclined pin holder								② Slide plate Common with SCZN ③ Slide plate		
		D1	d	d1	h	h1	h2	N	N1	S	a	T
SCZNP	12	11	5.5	-	16	10	-	30	17	20	35	6.5
	16	15	9	16	18	11	3	33	20	20	40	6.5
	20	18	11	20	22	13	5.5	38	25	24	40	6.5
	25	22	11	20	26	15	5.5	45	31	26	45	7
	30	27.5	11	20	30	17	3.5	51	36	30	55	7.5

Slide Locks สไลด์ล็อก (SLLK)



Code	SLLK
Material	SUJ2
Hardness	58 HRC ~

Order Code D x P
SLLK 16 x F



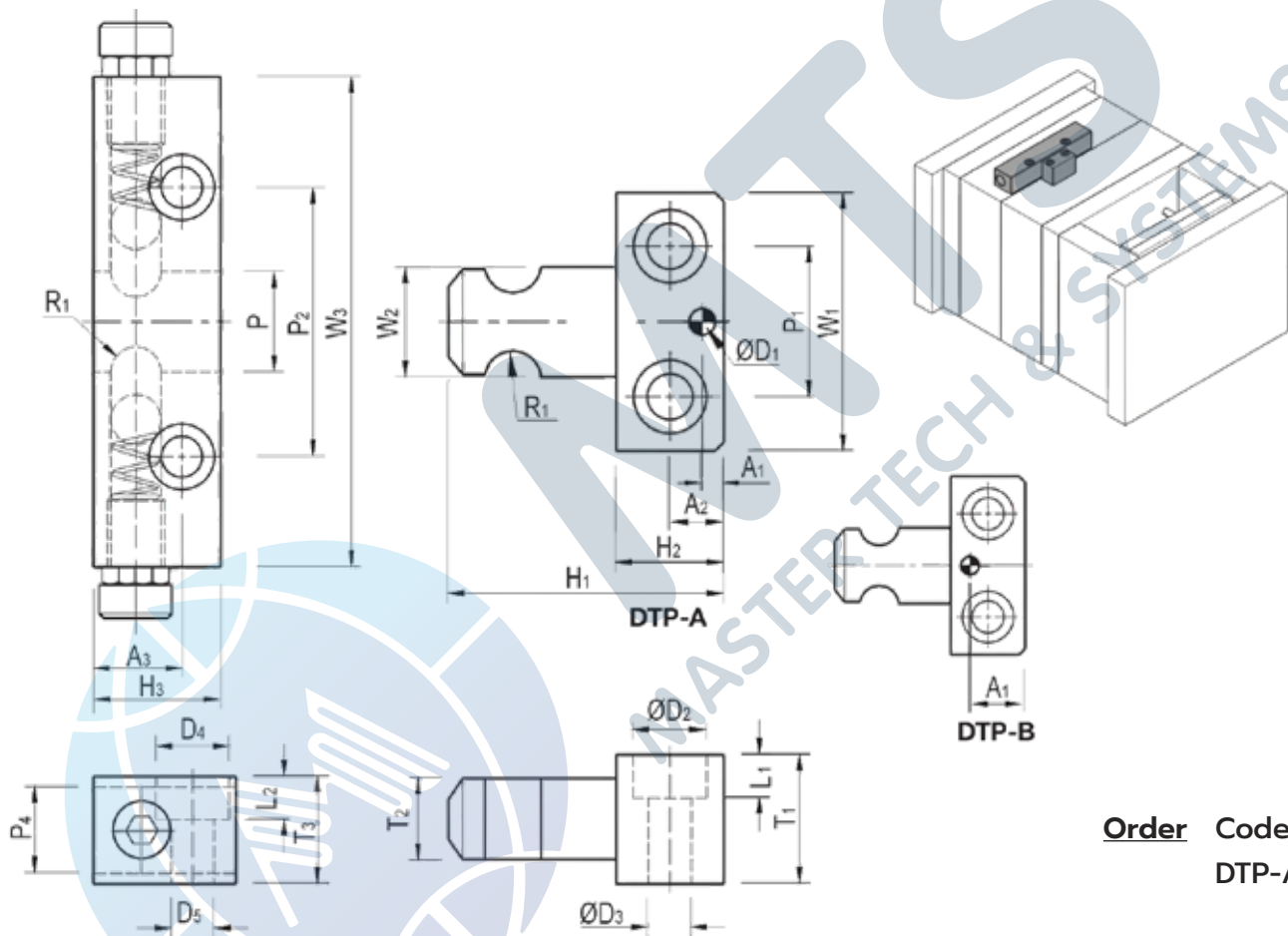
Code	D	P	ST	L	L1	a	b	c	d	Bolt size	Tap N	W	W1	R	Load (N)	
															P1 [min.]	P2 [max.]
SLLK	16	C (SWC8 - 15)	1.6	15	3.3	5	2.5	6	3.2	M3	M4	8	4	1	22.5	28.6
		F (SWF8 - 15)													62.0	78.8
	20	F (SWF10 - 15)	2	20	4.5	6	3.5	7.5	4.3	M4	M5	10	5	1.1	36.7	62.9
		L (SWL10 - 15)													64.1	110

Latch Locks

ตัวล็อกแม่พิมพ์ (DTP)

A

Standard Components
for Plastic Mold



Order Code
DTP-A

Code	P	P1	P2	P4	R1	T1	T2	T3	W1	W2	W3
DTP-A	18	25	60	12.5	R4.25	20.5	12	20.5	40	17.5	86
DTP-B	26	35	70	20	R6.5	30	19.5	25	60	25.5	127.5

A1	A2	A3	D1	D2	D3	D4	D5	H1	H2	H3	L1	L2
6	12	21	Ø5	Ø10.5	Ø6.5	Ø11	Ø6.5	48	20	28	6.5	6.5
20	12.5	23	Ø6	Ø17	Ø10	Ø17	Ø10	62.5	25	33	10	10

Taper Block Sets

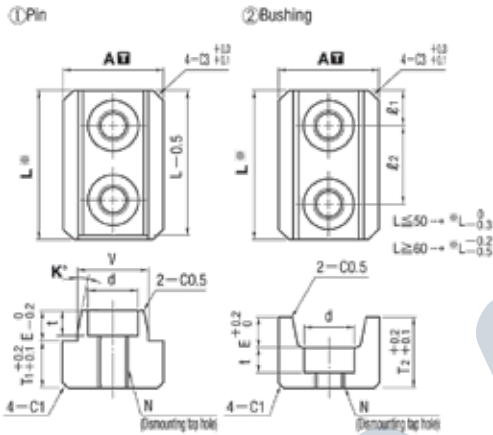
ชุดเทปอร์บล็อก (TBS)

A

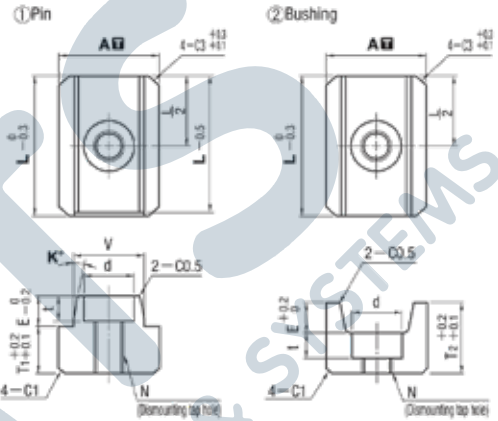
Standard Components
for Plastic Mold



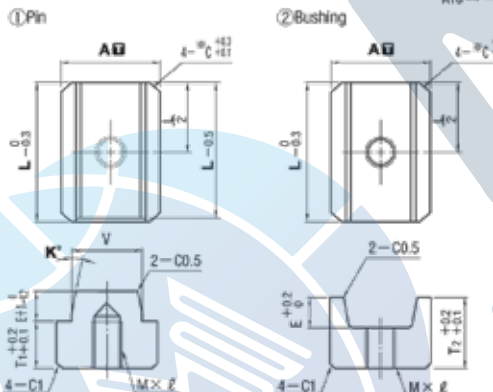
■ Mounting bolt hole: 2 (L30~120)



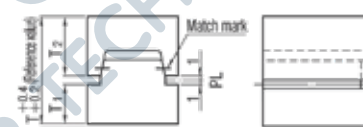
■ Mounting bolt hole: 1 (L20~25, except A12 and A16)



■ Mounting bolt hole: 1 (A12 and A16 only)



● Dimensions when combined



Order Code A x L x K
TBS 20 x 25 x 5

Code	T A	V dimension symmetry against A plane	Material	Hardness
TBS	+0.02 0	(Match mark type) To add fitting processing, not applicable to combination with other than sets.	SKD11 equivalent	58 - 62 HRC

Code	A	L	K°	V	E	T	T1	T2	Bolt hole				Installation bolts	Tap N	Tap hole M x ℓ	No. of bolt holes
									ℓ1	ℓ2	d	t				
TBS	12	15	1	7	5	23	7	14			-	-	M3 bolt	M3	M3 x 6	1 (Tap hole)
		20														
	16	20		9	7				12	8	5	M3 bolt	M4	M4 x 6	1 (Tap hole)	
		25														
	20	20		12	8				17	5	3.5	M3 bolt	M4	-	1	
		25														
		30														
	25	20		15	8				28	9	17	8	5	M4 bolt	M5	1
		25														
		30														
	30	25		17	8				32	10	20	9	6	M5 bolt	M6	1
		30														
		40														
	35	30		20	10				35	11	22	10	7	M6 bolt	M8	2
		40														
		50														
	45	40		25	15				45	14	29	11	7	M6 bolt	M8	2
		50														
75																
65	100	35	5	35	20	60	19	39	14	9	M8 bolt	M10	2			
	60															
	90															
	120															

Taper Block Sets

ชุดแท่งบล็อก (TBSF)

A

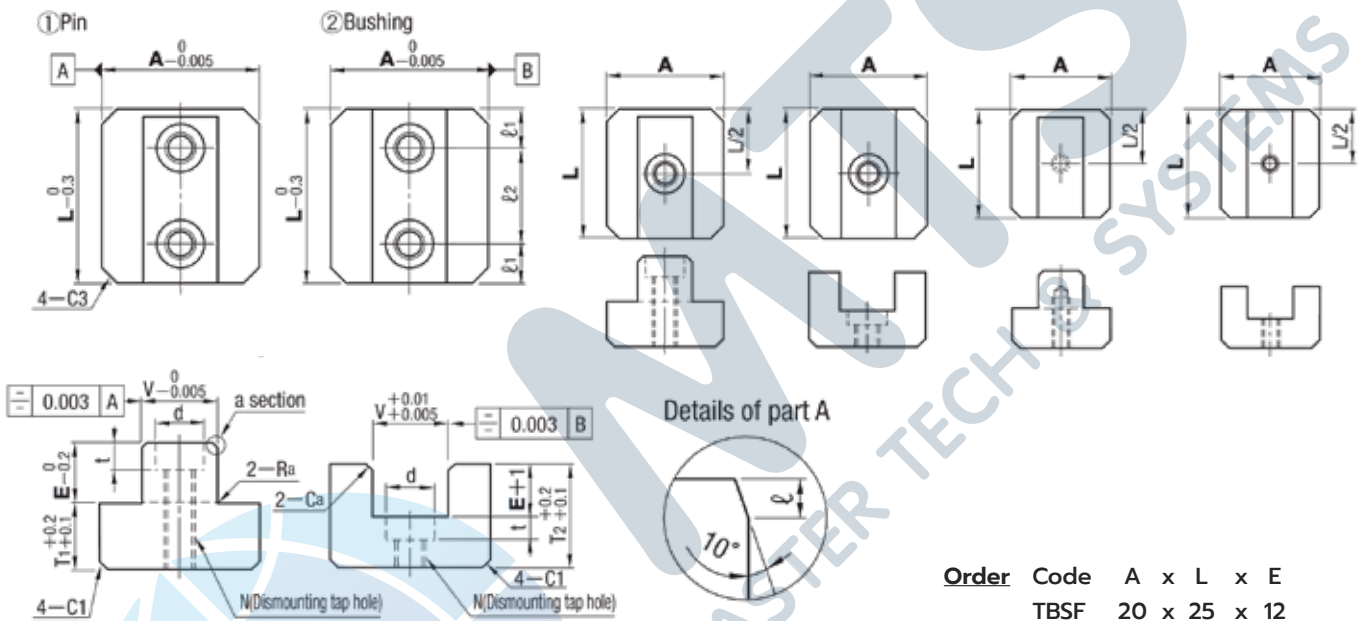
Standard Components
for Plastic Mold



■ Mounting bolt hole: 2 (L30~50)

■ Mounting bolt hole: 1 (L25)

■ Mounting bolt hole: 1 (L16 · 20)



Order Code A x L x E
TBSF 20 x 25 x 12

Code	T V		Positioning precision (Clearance)	V dimension symmetry against A/B plane	Material	Hardness
	① Pin	② Bushing				
TBSF	0 -0.005	+0.01 +0.005	0.005 - 0.015	0.003 or less	SKD11	58 - 62 HRC

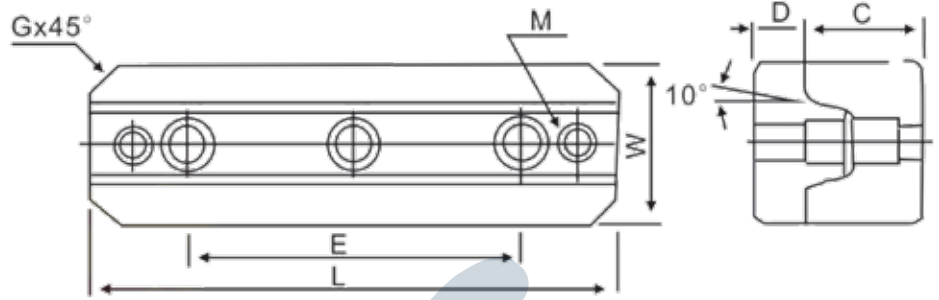
Code	A	L Selection	E	V	T	T1	T2	l	Ra	Ca	Bolt hole				Installation bolts	Tap N	No. of bolt holes									
											l1	l2	d	t												
TBSF	16	16	8	9	26	8	17	1	0.5	0.5	-	-	-	-	M4 bolt	M4	1 (Tap hole)									
			12		30		21										1	1								
		20	8		26		17										1	0.5	0.5	7.5	15	6.5	3.5	M3 bolt	1	
			12		30		21										1	0.5	0.5	7.5	15	6.5	3.5	M3 bolt	2	
	25	25	10	32	15	32	10	21	1	0.5	0.5	-	-	8	5	M4 bolt	M5	1								
			15	37		26		2										1	1							
		30	10	32		21		1										0.5	0.5	7.5	15	9.5	6	M5 bolt	M6	
			15	37		26		2										1	1							
	30	30	12	36	17	44	12	23	1	0.5	0.5	7.5	15	9.5	6	M5 bolt	M6	2								
			20	44		31		2											1	1						
		40	12	36		23		1											0.5	0.5	10	20	11	7	M6 bolt	M8
			20	44		31		2											1	1						
	35	40	15	41	20	51	12	28	2	1	1	10	30	11	7	M6 bolt	M8	2								
			25	51		38		1											1							
		50	15	41		28		1											1	10	30	11	7	M6 bolt	M8	
			25	51		38		1											1							

Tapered Block Sets

ชุดเทเปอร์บล็อก (S02)

A

Standard Components
for Plastic Mold

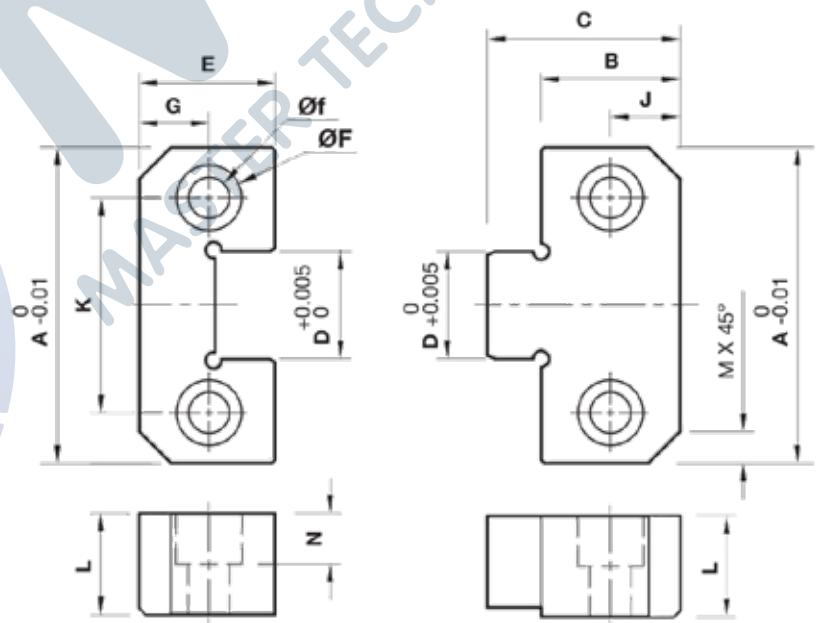
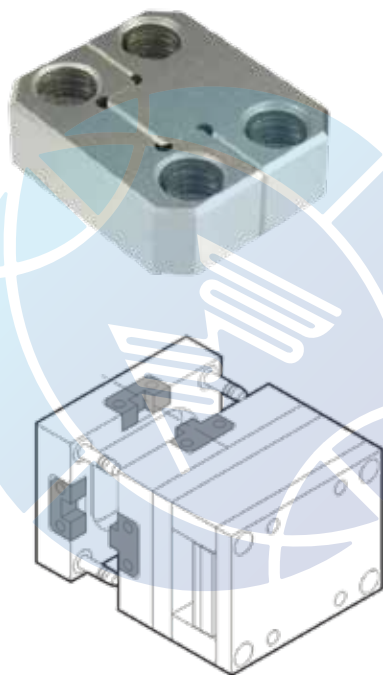


Code	S02
Material	YK30
Hardness	58 HRC ~

Order Code
S02-50

Code	E	L	W	D	C	G	M
S02-50	-	50	25	8	17.5	5	M5
S02-100	60	100	30	10	22	5	M6
S02-150	100	150	40	13	25	5	M8

Side Locks ตัวล็อคตำแหน่งแม่พิมพ์ (PL)



Order Code
PL-38

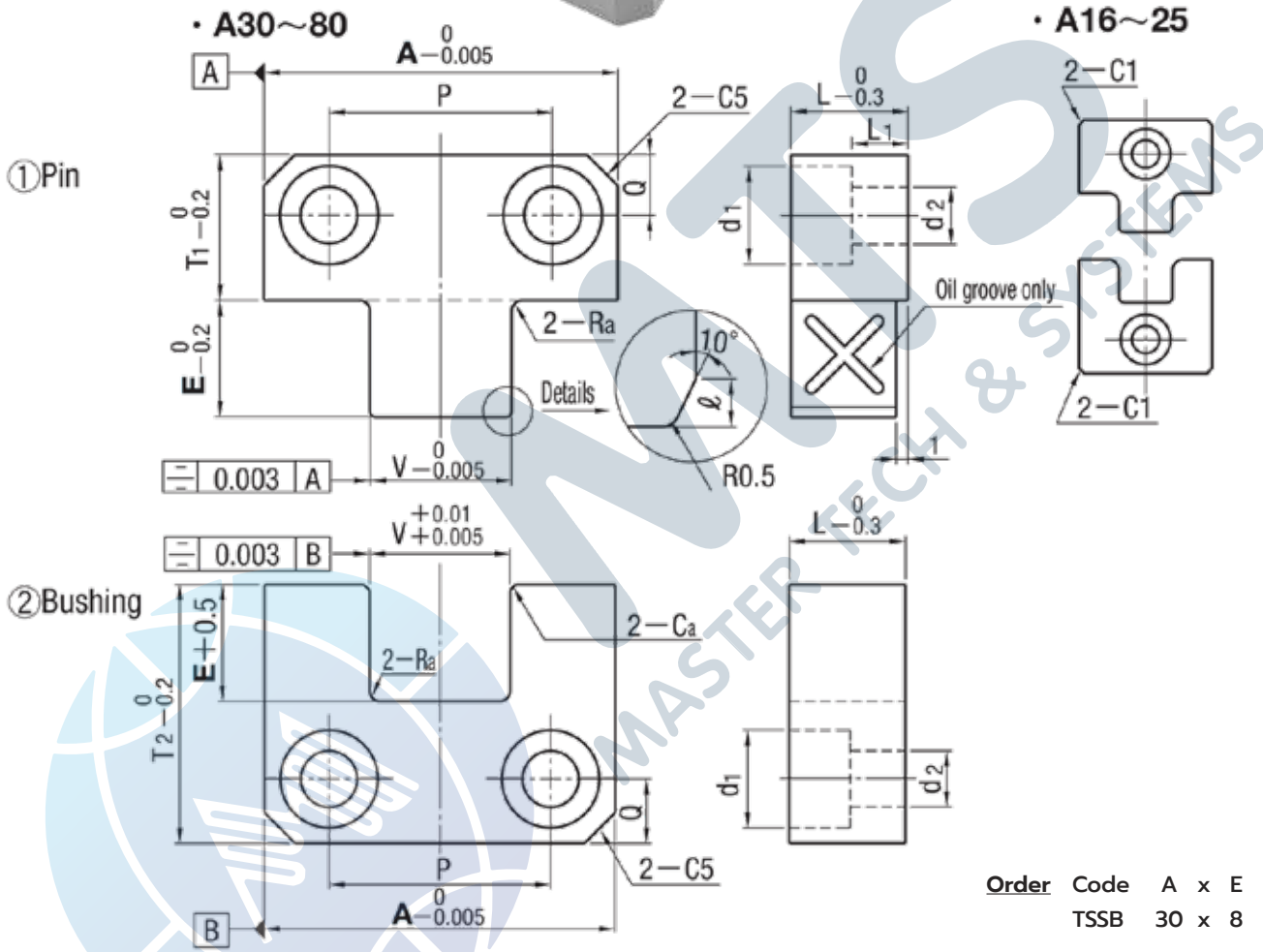
Code	A	B	C	D	F	f	K	J	G	M	L	N	E
PL-38	38	22	30	12	10	6.5	22	7	7	5	13	8	22
PL-50	50	21.5		17	11	6.5	34	11	11		16		21.5
PL-75	75	36	50	25	17	11	50	18	18	8	19	12	36
PL-100	100	45	65	35			70	22	22	10			25
PL-125	125			45			45	84	22	22	10		25

Side Straight Block Sets

ตัวล็อคตำแหน่งแม่พิมพ์ (TSSB)

A

Standard Components
for Plastic Mold



Code	T V		Positioning precision (Clearance)	V dimension symmetry against A/B plane	Material	Hardness
	① Pin	② Bushing				
TSSB	0 -0.005	+0.01 +0.005	0.005 - 0.015	0.003 or less	SKD11	58 - 62 HRC

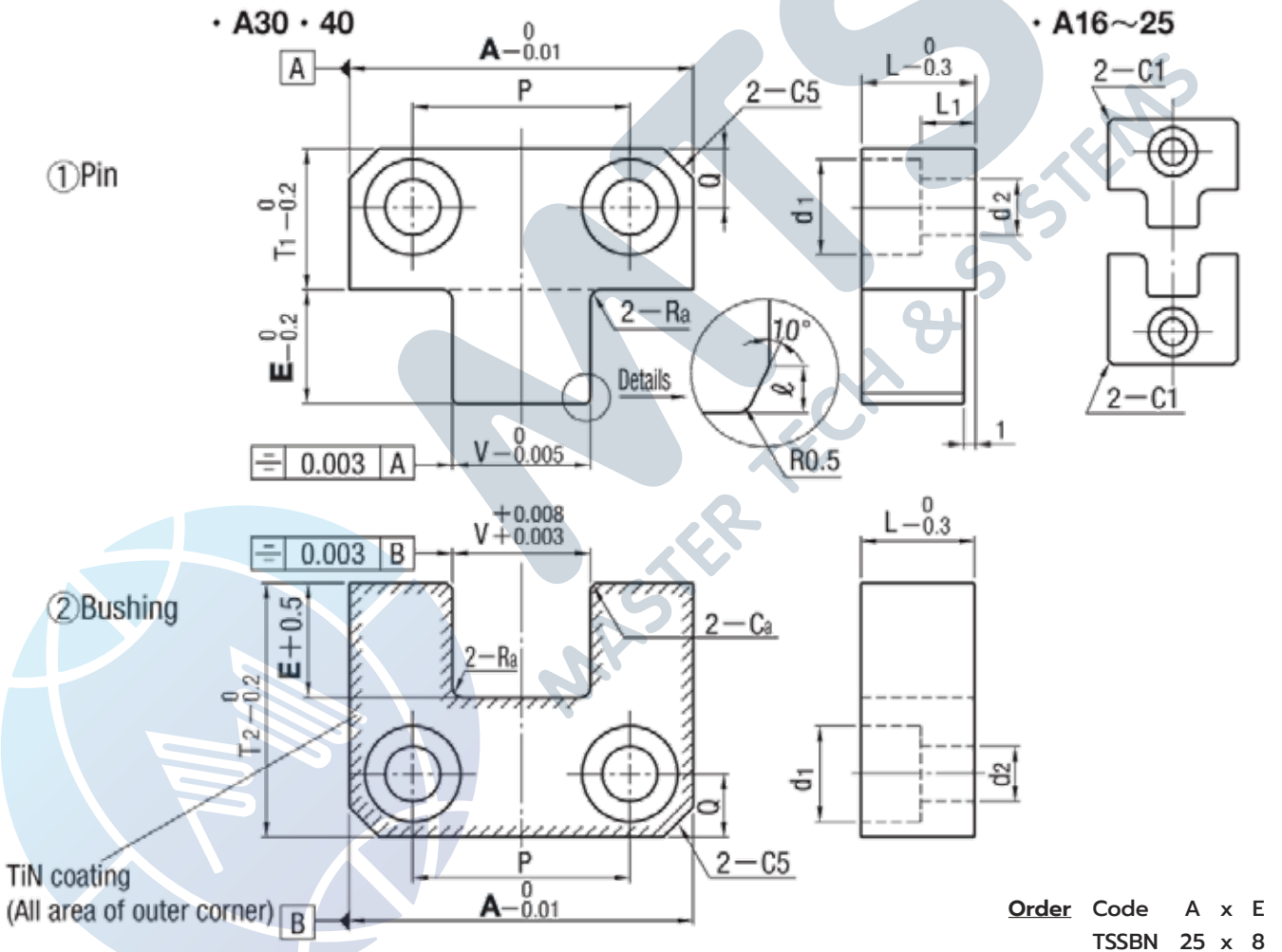
Code	A	E	V	T1	T2	ℓ	Ra	Ca	Bolt hole				Installation bolts	L	L1	
									P	Q	d1	d2				
TSSB	16	6	7	11	17	1	1	0.5	-	5	8	4.5	M4 bolt	8	3	
	20	6	8													
	25	8	10													
	30	8	12	14	19	22	1	1	0.5	16	6	9.5	5.5	M5 bolt	10	4
		20														
	40	10	15	18	28	28	1	1	0.5	22	7	11	6.6	M6 bolt	13	6
		25														
	60	20	25	30	50	50	2	2	1	36	12	14	8.6	M8 bolt	20	11
		35														
	80	30	30	40	70	70	2	2	1	52	14	18	11	M10 bolt	25	14
45																

Side Straight Block Sets - Tin Coating

ตัวล็อกตำแหน่งแม่พิมพ์ (TSSBN)

A

Standard Components
for Plastic Mold



Code	T V		Positioning precision (Clearance)	V dimension symmetry against A/B plane	Material	Hardness
	① Pin	② Bushing				
TSSBN	0 -0.005	+0.008 +0.002	0.003 - 0.013	0.003 or less	① SKD11 ② SKD11 - TiN coating	① 53 - 56 HRC ② 53 - 56 HRC 2000 HV~

Code	A	E	V	T1	T2	ℓ	Ra	Ca	Bolt hole				Installation bolts	L	L1
									P	Q	d1	d2			
TSSBN	16	6	7	11	17	1	1	0.5	-	5	8	4.5	M4 bolt	8	3
	20	6	8												
	25	8	10	19	16				6	9.5	5.5	M5 bolt	10	4	
	30	8	12	14	22				22	7	11	6.6	M6 bolt	13	6
40	10	15	18	28											

Positioning Straight Block Sets

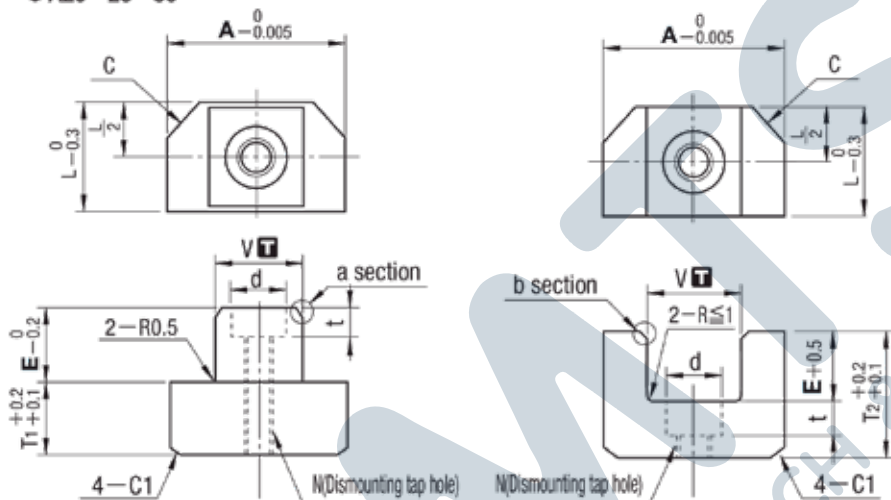
ตัวล็อคตำแหน่งแม่พิมพ์ (TTSB)

A

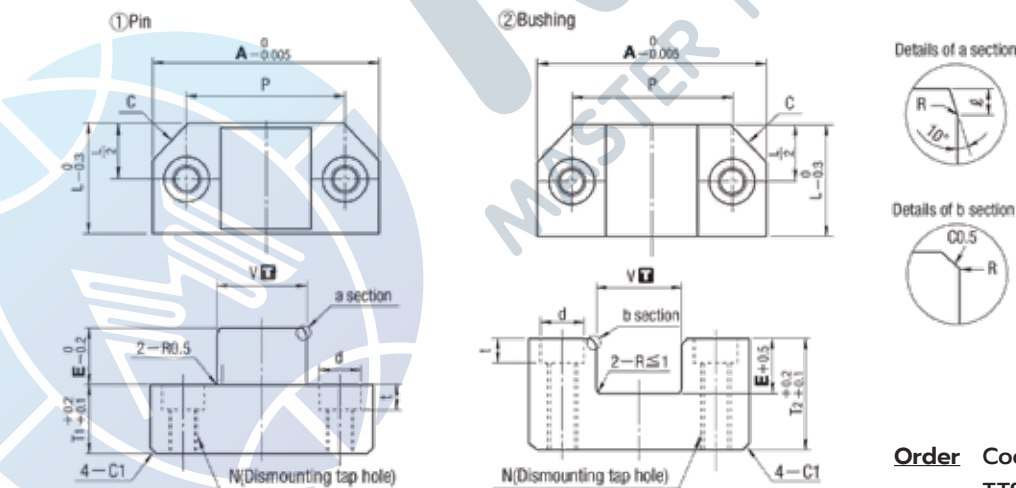
Standard Components
for Plastic Mold



● A20 · 25 · 30



● A40 · 50



Order Code A x E
TTSB 25 x 8

Code	T V		Positioning precision (Clearance)	V dimension symmetry against A/B plane	Material	Hardness
	① Pin	② Bushing				
TTSB	0 -0.005	+0.01 +0.005	0.005 - 0.015	0.003 or less	SKD11	58 - 62 HRC

Code	A	E	L	T	T1	T2	V	ℓ	C	P	Bolt hole		Installation bolts	Tap N
											d	t		
TTSB	20	6	12	23	8	14	10	0.5	4	-	6.5	3.5	M3 bolt	M4
	25	8	15	28	10	17	12	1			8	4.5		
	30	8		20	32	12	19		15	6			28	M4 bolt
	40	10	43		17	25	20							
		15	25			28								
50	15	25	46	17	25	28	20	2	35	9.5	5.5	M5 bolt	M6	

Positioning Block Sets

ตัวล็อกตำแหน่งแม่พิมพ์ (LBJX)

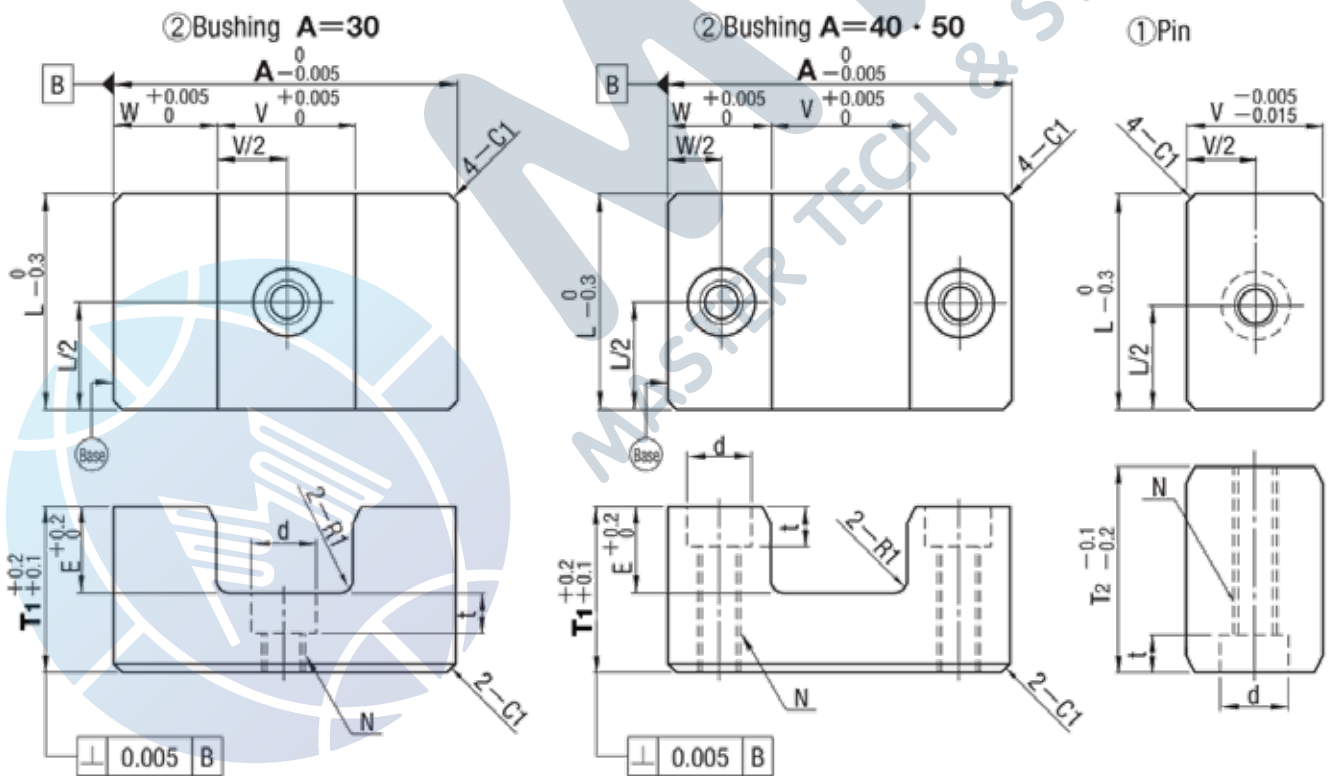
A

Standard Components
for Plastic Mold



Code	LBJX
Material	SKD11
Hardness	58 - 62 HRC

Order Code A x T1
LBJX 30 x 19

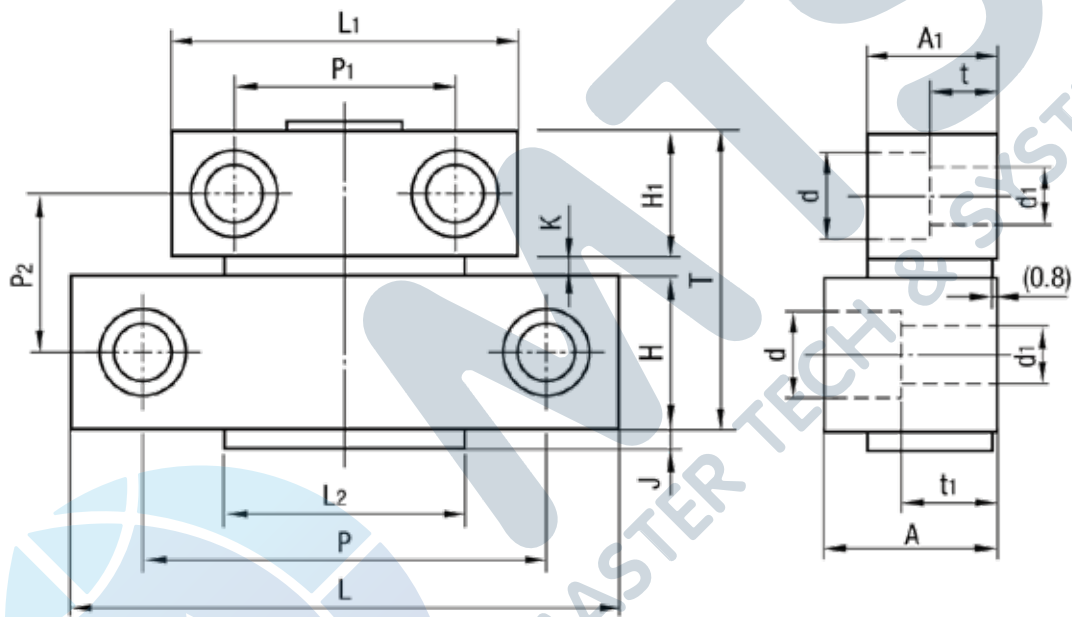


Code	A	T1	W	V	E	T2	d	t	Installation bolts	Tap N	L				
LBJX	30	14	9	12	6	18	8	4.5	M4	M5	20				
		19													
	40	19	12	16	10	25					11	6.5	M6	M8	30
		24													
	50	29	15	20	15	35					11	6.5	M6	M8	30
		34													

Roller Lock Sets ชุดล็อกโรลเลอร์ (MPLK)

A

Standard Components
for Plastic Mold



* Use under temperature 80°

Code	MPLK
Material	S50C + SK3

Order Code No.
MPLK 60

Standard type

Code	No.	Max. usable load (2 sets under normal temp)	L	L1	L2	T	H	H1	J	K	P	P1	P2	A	A1	t	t1	d	d1	A 2 pcs. Each	
MPLK	10	981N {100kgf}	48	36	25	42	22	18	2	2	36	24	22	24	16	9.5	18	11	6.5	CB6 - 20 CB6 - 30	
	20	1961N {200kgf}	54	42	35	48.5	25	20	3.5	50	31	26	27	19	9.5	17	6.5			CB6 - 20 CB6 - 25 CB6 - 30 CB6 - 35	
	30	2942N {300kgf}	65	46	35	56.5	25	20	3.5	52	33	34	27	19	9.5	17	14			9	CB8 - 30 CB8 - 35
	60	5884N {600kgf}	73	50	35	87.5	30	24	4	4	76	42	31	34	25	13	19	17	11	9	CB10 - 30 CB10 - 35
	80S	7845N {800kgf}																			
	100	9807N {1000kgf}	103	65	48	89	30	24	4	4	76	42	31	34	25	13	19	17	11	9	CB10 - 30 CB10 - 35

Long type

Code	No.	Max. usable load (2 sets under normal temp)	L	L1	L2	T	H	H1	J	K	P	P1	P2	A	A1	t	t1	d	d1	A 2 pcs. Each
MPLK	60L	5884N {600kgf}	73	50	35	79.5	25	20	3.5	34.5	52	33	57	27	19	9.5	17	14	9	CB8 - 30 CB8 - 35
	80	7845N {800kgf}				87.5				42.5										
	100L	9807N {1000kgf}	103	65	48	89	30	24	4	4	76	42	62	34	25	13	19	17	11	9

Magnet Lock Sets

ชุดล็อกแม่เหล็ก (MLK)

A

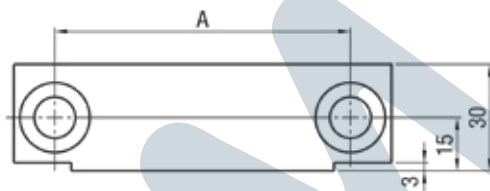
Standard Components
for Plastic Mold



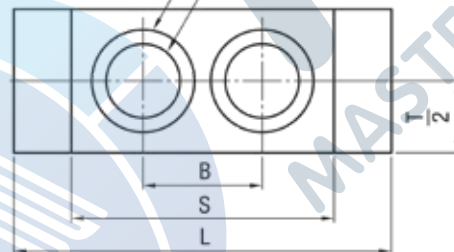
Code	MLK
Material	SS400 + Magnet

Order Code No.
MLK 60

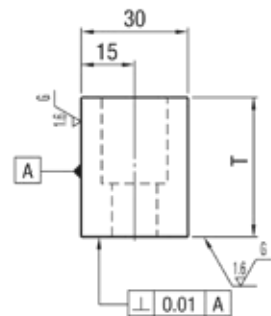
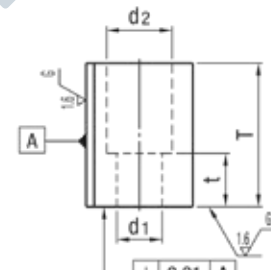
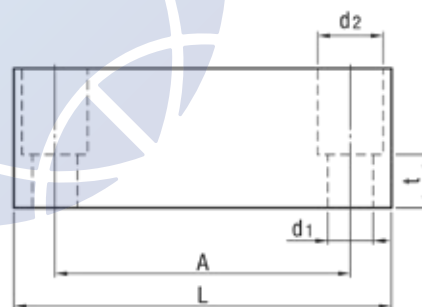
● Holder



2- ϕ D₂ (Identification collar)
2- ϕ D₁ (Magnets)



● Block



Code	Adhesion strength (per set under 20°C)	A	B	S	L	T	t	D ₁	D ₂	Identification collar	d ₁	d ₂	Accessories	
MLK 40	392.3N {40kgf}	63	25	60	80	25	12	18	22	Gold (Brass)	9	14	CB8 - 25 Spring washers	4pcs. 4pcs.
MLK 80	784.5N {80kgf}									Silver (Aluminum)				
MLK 100	980.7N {100kgf}	100	39	79	126	40	15	30	34	Gold (Brass)	11	18	CB10 - 30 Spring washers	4pcs. 4pcs.
MLK 200	1961.3N {200kgf}									Silver (Aluminum)				

Parting Lock Sets

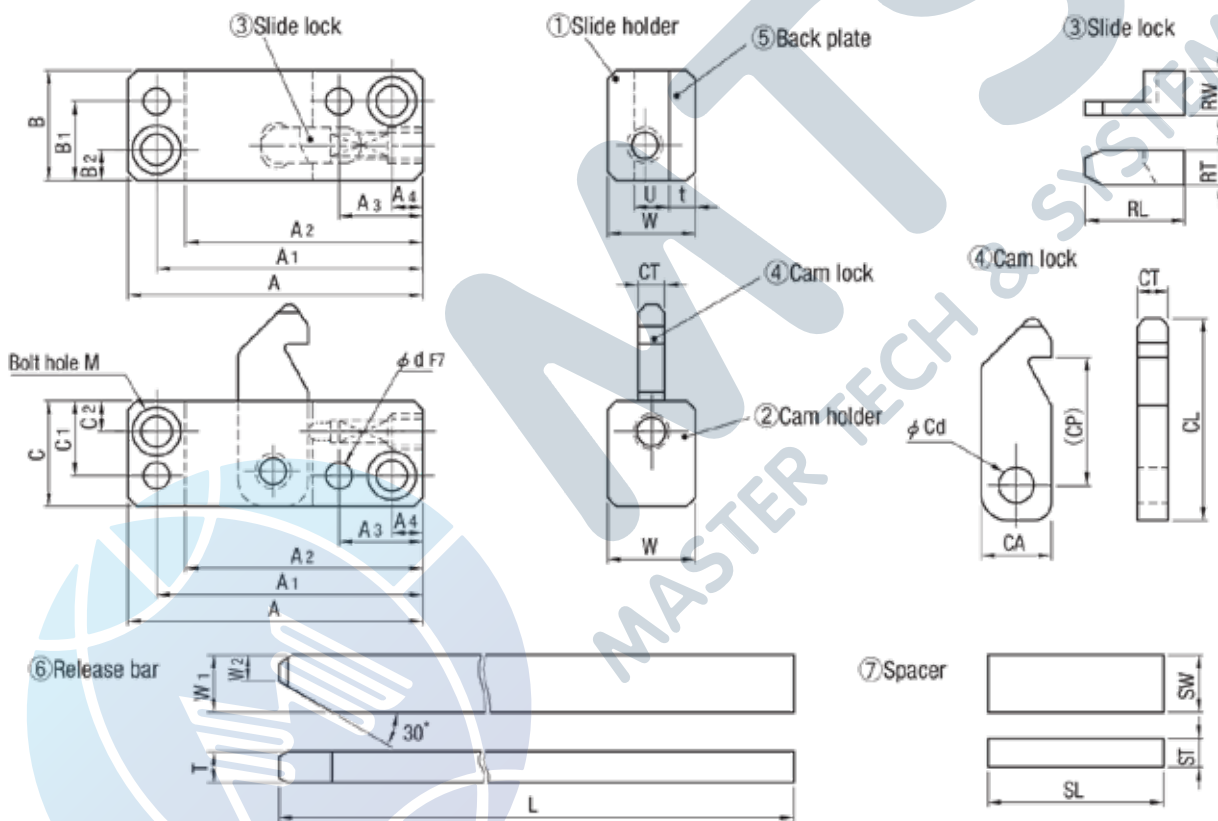
ชุดพาร์ทตึงล็อก (PLS / PLM / PLL)

A

Standard Components
for Plastic Mold



Order Code
PLS



Item	① Slide holder	② Cam holder	③ Slide lock	④ Cam lock	⑤ Back plate	⑥ Release bar	⑦ Spacer
Material	SKD61	SKD61	SKD11	SKD11	SK	S45C	S45C
Hardness	50 - 55 HRC	50 - 55 HRC	58 HRC ~	58 HRC ~	50 HRC ~	45 HRC ~ (Induction hardening)	-

Code	① Slide holder ② Cam holder													③ Slide lock				
	A	A1	A2	A3	A4	B	B1	B2	C	C1	C2	W	U	Bolt hole M	d	RL	RT	RW
PLS	68	61.5	55	19	7	26	19	7	24	17	7	20	8	For M6	φ 6	18	7	11
PLM	88	79	70	24	9	38	29	9	30	21	9	30	12	For M8	φ 8	20	9	16
PLL	104	93	82	27	11	48	37	11	38	27	11	45	20	For M10	φ 10	24	12	26

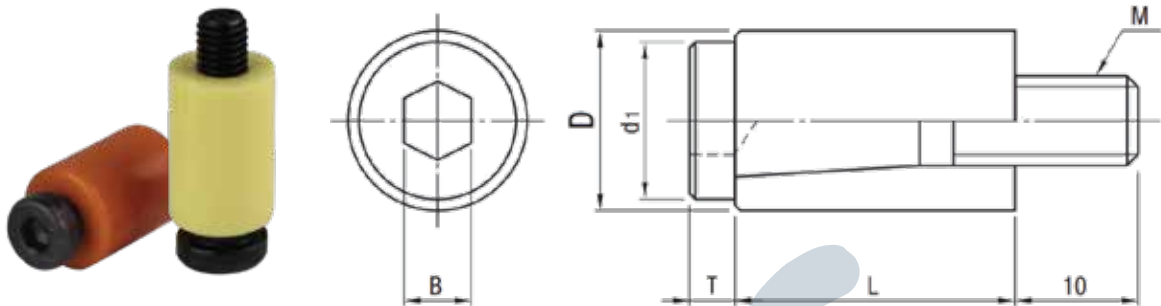
Code	④ Cam lock					⑤ t	⑥ Release bar				⑦ Spacer			Accessories		
	CL	CP	CA	CT	Cd		W1	W2	T	L	SW	ST	SL	Bolt 4 pcs.	Dowel pin 4 pcs.	Spring 2 pcs.
PLS	45	28	16	7.5	8	6	13	5.9	7	250	13	6.5	40	CB6 - 25	MSTM6 - 30	WHH6 - 15
PLM	64	41	20	10	10	7	16	8	10	300	16	8	50	CB8 - 35	MSTM8 - 40	WHH8 - 20
PLL	84	53.5	25	18	13	8	20	9.5	15.5	350	20	10.2	55	CB10 - 50	MSTM10 - 50	WHH8 - 20

Parting Locks

พาร์ทติงล็อก (PL / PLO)

A

Standard Components
for Plastic Mold

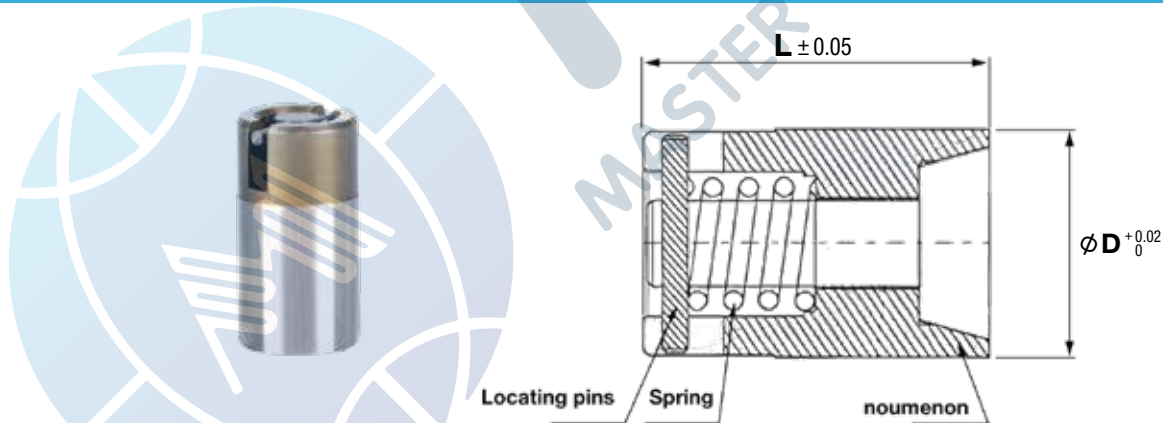


Code	PL (Yellow) PLO (Orange)
Material	SCM435 + Resin

Order Code D
PL 16

Code	D	d1	M	B	L	T	Color	Qty / Box
PL	10	8.5	5	4	18	3	Yellow	12
	12	11	6	5	20	3.5		12
	13	11	6	5	21	3.5		12
	16	14	8	6	26	4.5		12
	20	16	10	8	31	5		10
PLO	13	11	6	5	21	3.5	Orange	12
	16	14	8	6	26	4.5		12
	20	16	10	8	31	5		10

Air Jet Valves ตัวระบายอากาศ (AJV)



Code	AJV
Material	SUS420

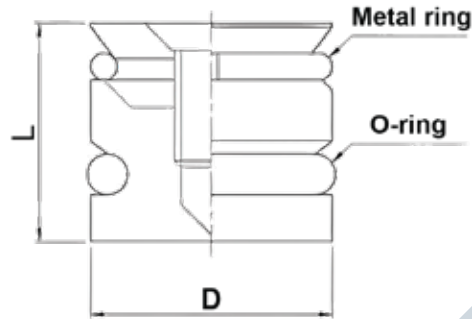
Order Code D x L
AJV 16 x 30

Code	D	L
AJV	5	12
	6	12
	8	12 15
	10	12 15 20
	12	12 15 20 25
	16	20 25 30
	20	20 30 35
	25	30
	30	30

Cooling Plugs ตัวอุดรูน้ำ (CL)

A

Standard Components
for Plastic Mold

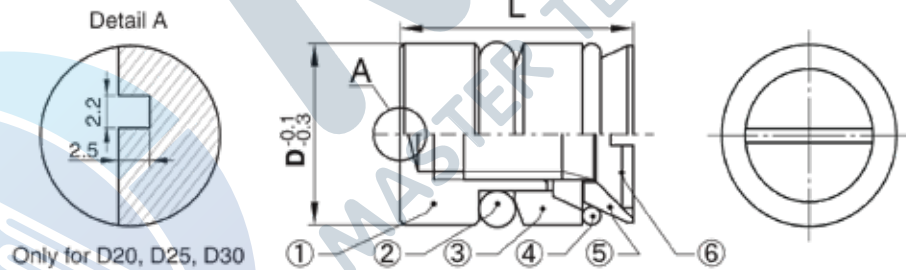


Code	D	L
CL	6	10
	8	10
	10	11
	12	12
	14	13
	16	14
	20	18
	25	19
30	19	

Code	CL
Material	Brass

Order Code D
CL 12

Cooling Plugs ตัวอุดรูน้ำ (JWP)

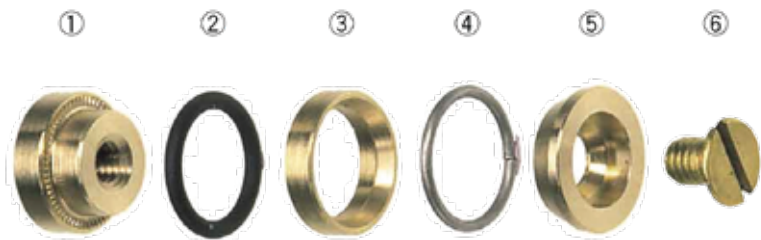


Only for D20, D25, D30

Code	JWP
Material	Brass

Order Code D
JWP 8

Code	D	L
JWP	6	10
	8	
	8.5	
	10	
	11.5	
	12	
14	12	



Item	① Body	② O-rings	③ Spacer	④ Metal ring	⑤ Tapered washer	⑥ Screw
Material	Brass (C3604)	Fluor rubber	Brass (C3604)	-	Brass (C3604)	Brass (C3604)

Date Inserts

ตัวชั้บออกวันที่ (DM□, DT□, DT□X)

DM□ แบบถอดใส่ไม่ได้



Material SUS420
45-50 HRC

Order Code D x L
DMS 6 x 10

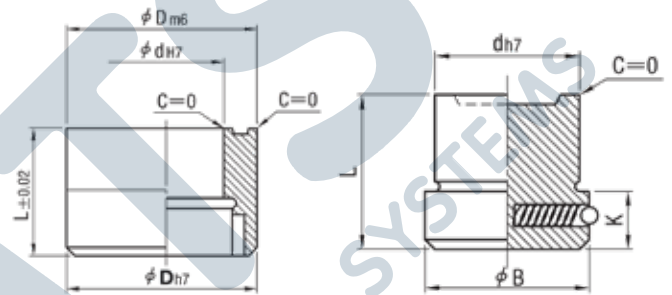
Code	D	L
DMB	3	6
		8
DM	4	6
		8
DMS	5	8
		8
DMD	6	10
		10
DMF	8	10
		12
DME	10	10
		12
DMN	12	14
		14
	16	14
	20	16

DT□ แบบถอดใส่ได้



Material SUS420
45-50 HRC

Order Code D
DTD 10



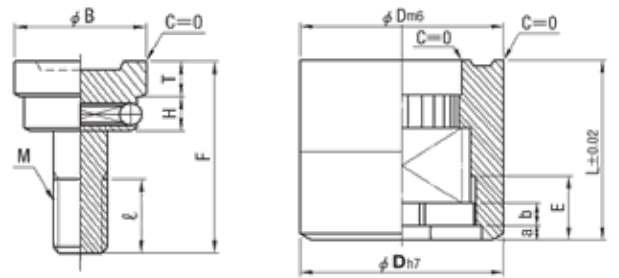
Code	D	Dm6	Dh7	L	d	dh7	B	K
DTBB	3	+0.008 +0.002	0 -0.010	8	1.4	+0.010 0	2	3
DT	4	+0.012	0	8	1.9		2.8	3
DTS	5	+0.004	-0.012	8	2.3	0	3.4	4
	6			8	2.8		4	4
DTD	8	+0.015	0	10	4	+0.012	5.6	4
DTF	10	+0.006	-0.015	12	5	0	6.5	6
DTE	16	+0.018 +0.007	0 -0.018	14	10	+0.015 0	12	6
	DTN	20	+0.021 +0.008	0 -0.021	16	12	+0.018 0	14

DT□X แบบถอดใส่ได้



Material SUS420
45-50 HRC

Order Code D
DTBX 12



Code	D	Dm6	Dh7	L	E	a	b	F	T	H	B	ε	M X P
DTBX	4	+0.012	0	8	2.8	1.0	1.2	7.7	1.5	3.0	2.4	2.7	M1.6 X 0.20
	5	+0.004	-0.012	8	2.85						2.9		
6			8	2.9	3.7								
DTXS	8	+0.015	0	10	3.4		1.5	9.7	2.0	3.5	5.0	3.2	M2.3 X 0.25
DTDX	10	+0.006	-0.015	12	4.2						11.7	4.0	6.3
DTFX	12	+0.018	0	14	4.4		1.2	1.8	13.7	2.5	4.3	7.5	4.2
DTEX	16	+0.007	-0.018	14	5.0	1.4	11.0				4.8		
DTNX	20	+0.021 +0.008	0 -0.021	16	5.3	1.5	2.0	15.7	3.5	5.0	13.2	5.3	M4.0 X 0.35

Type	Year + Month	4 Year	6 Year	Month	Days (0-3)	Days (0-9)	Blank
	DMB	DM	DMS	DMD	DMF	DME	DMN
	DTBB	DT	DTS	DTD	DTF	DTE	DTN
	DTBX	DTX	DTXS	DTDX	DTFX	DTEX	DTNX

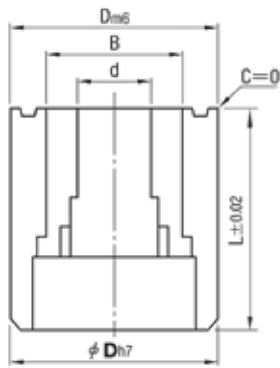
Date Insert ตัวซับอกวันที่ (DTBZ / DTEZ)

A

Standard Components
for Plastic Mold



Material SUS420
45-50 HRC



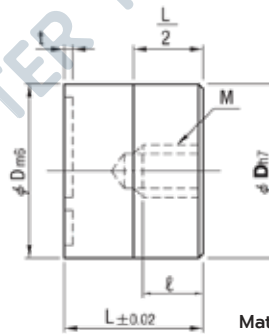
D	Dm6	Dh7	L	B	d
6	+0.012 +0.004	0 -0.012	10	3.8	1.8
8	+0.015 +0.006	0 -0.015		5.3	2.5
10	+0.015 +0.006	0 -0.015	12	6.4	3.2
16	+0.018 +0.007	0 -0.018	14	10.2	5.0

Code	Year + Month	D	Year
DTBZ		6	26 (for 2026)
		8	27 (for 2027)
		10	28 (for 2028)
		16	

Code	Day	D
DTEZ		6
		8
		10
		16

Order Code D x Year
DTBZ 6 x 26
DTEZ 8

Recycle Mark ตัวซับอกเครื่องหมายรีไซเคิล (RM□□)



Material SUS420
45-50 HRC

Code	D	L	M	ℓ	A	t
RM1J RM1E	8	10	M4	5	5	0.2
RM2J RM2E	10	12	M5	7	6	0.3
RM3J RM3E						
RM4J RM4G	16	14	M6	7	10	0.3
RM5J RM4F						
RM6J RM7E	20	16	M6	8	12	0.3
RM7J						

Order Code D
RM1E 10

Applicable Plastics	Polyethylene terephthalate	High density Polyethylene	Polyvinyl chloride	Low density Polyethylene	Polypropylene	Polystyrene	Others	
US SPI standard	RM1J 	RM2J 	RM3J 	RM4J 	RM5J 	RM6J 	RM7J 	
	German and French standards comparable to US SPI standard	RM1E 	RM2E 	RM3E 	RM4G (Germany) 	RM4F (France) 	RM5J 	RM6J

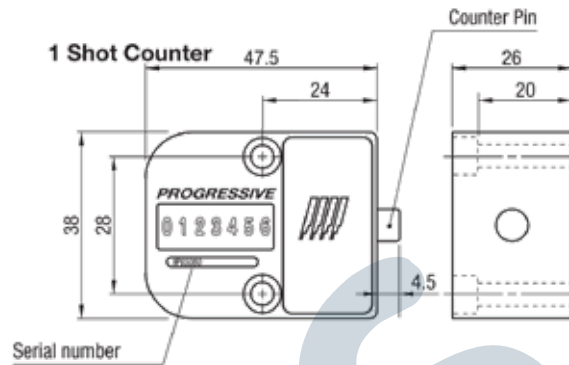
Mold Shot Counters

ตัวนับจำนวนแม่พิมพ์

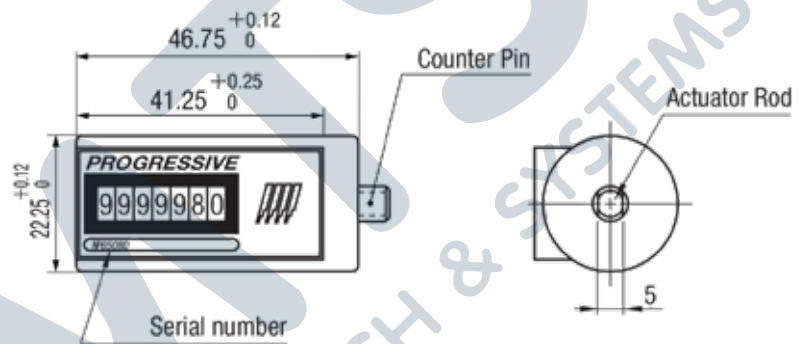
A

Standard Components
for Plastic Mold

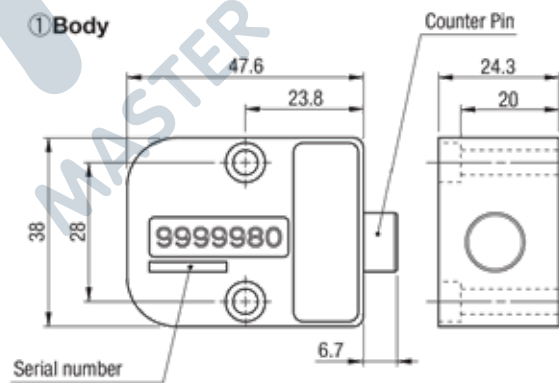
M-CVPL



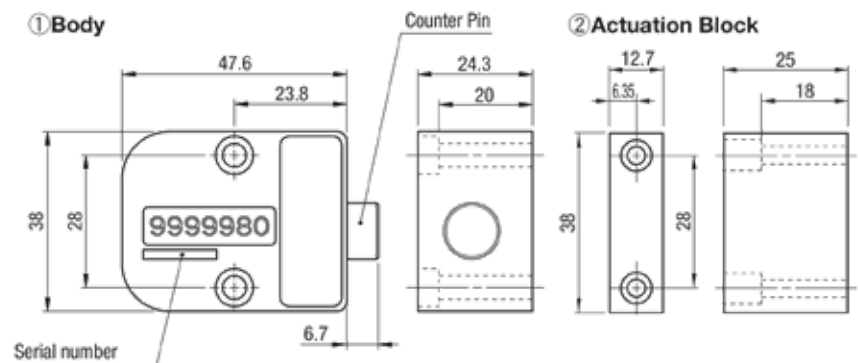
M-CVR



M-RCC



M-RCCB



Shim Plates

แผ่นขี้น (CS / SS)

A

Standard Components
for Plastic Mold



Code	CS
Material	Carbon Steel

Code	SS
Material	Stainless Steel SUS304

Code	Thickness	Width x Length		
		12.7mm 1m	12.7mm 2m	50mm 5m
CS	0.02		•	
	0.03		•	•
	0.04		•	•
	0.05		•	•
	0.06		•	•
	0.07		•	•
	0.08		•	•
	0.09		•	•
	0.10		•	•
	0.12		•	•
	0.15		•	•
	0.18		•	•
	0.20		•	•
	0.25		•	•
	0.30		•	•
	0.40		•	•
	0.50		•	•
	0.60		•	•
0.70		•	•	
0.80		•	•	
0.90		•	•	
1.00		•	•	
1.50	•			
2.00	•			

Code	Thickness	Width x Length						
		12.7mm 2m	12.7mm 5m	50mm 3m	50mm 5m	100mm 5m	150mm 1m	300mm 1m
SS	0.005	•	•		•			
	0.01	•	•		•	•		
	0.02	•	•		•	•	•	•
	0.03		•		•	•	•	•
	0.04		•		•	•	•	•
	0.05		•		•	•	•	•
	0.06		•		•	•		
	0.07		•		•	•		
	0.08		•		•	•		•
	0.09		•		•	•		
	0.10			•		•	•	•
	0.12			•		•		
	0.15			•		•	•	•
	0.20			•		•	•	•
	0.25			•		•	•	•
	0.30			•	•	•	•	•
	0.35			•	•			
	0.40			•	•		•	•
	0.50			•	•	•	•	•
	0.60			•	•		•	•
0.70			•	•			•	
0.80			•	•		•	•	
0.90			•	•		•		
1.00			•	•		•	•	
1.20							•	
1.50							•	
2.00							•	

Fitting Joints

ข้อต่อตรง (PC)



Code	PC
Material	Resin, Brass

Order Code Size
PC 4 - 01

Code	เกลียว R(PT)	ขนาดสายลม (D)				
		Ø4	Ø6	Ø8	Ø10	Ø12
PC	M5	PL4-M5	PL6-M5	-	-	-
	1/8"	PL4-01	PL6-01	PL8-01	PL10-01	PL12-01
	1/4"	PL4-02	PL6-02	PL8-02	PL10-02	PL12-02
	3/8"	-	PL6-03	PL8-03	PL10-03	PL12-03
	1/2"	-	PL6-04	PL8-04	PL10-04	PL12-04

Fitting Joints ข้อต่องอ (PL)



Code	PL
Material	Resin, Brass

Order Code Size
PL 4 - 01

Code	เกลียว R(PT)	ขนาดสายลม (D)				
		Ø4	Ø6	Ø8	Ø10	Ø12
PL	M5	PL4-M5	PL6-M5	-	-	-
	1/8"	PL4-01	PL6-01	PL8-01	PL10-01	PL12-01
	1/4"	PL4-02	PL6-02	PL8-02	PL10-02	PL12-02
	3/8"	-	PL6-03	PL8-03	PL10-03	PL12-03
	1/2"	-	PL6-04	PL8-04	PL10-04	PL12-04

Fitting Joints

ข้อต่อตวง (M-POC)

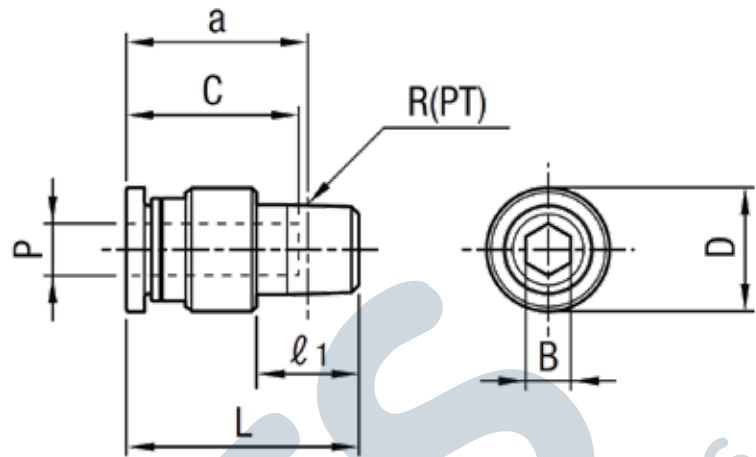
A

Standard Components
for Plastic Mold



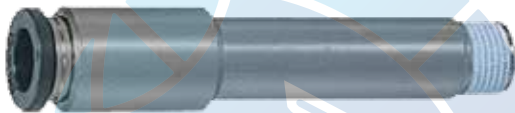
Code	M-POC
Material	Resin + Brass with Nickel plating

Order Code No.
M-POC 4 - 01



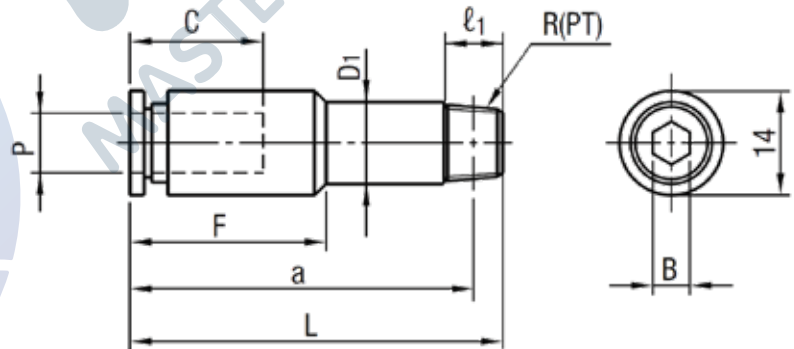
Code	No.	Matching tubes Outer x Inner dia.	R(PT)	D	B	L	a	l ₁	Tube inserting hole	
									Hole dia. P	Depth C
M-POC	4-01	4 x 2.5	1/8	9.7	2.5	20.0	16.0	8	4	14.9
	6-01			11.8		22.1	18.1			
	6-02	6 x 4	1/4	13.7	4	21.3	15.2	11	6	17
	8-01			13.7	5	25.9	21.9	8		
	8-02	8 x 6	1/4	16.8	6	25.1	19.1	11	8	18.2
	8-03					22.2	15.9	12		
	10-02					29.8	23.8	11		
	10-03	10 x 7.5	3/8	17.5	6	29.3	23.0	12	10	20.7
	12-03					20.8	8	31.9		

Fitting Joints ข้อต่อตวง (M-POCL)



Code	M-POCL
Material	Resin + Brass with Nickel plating

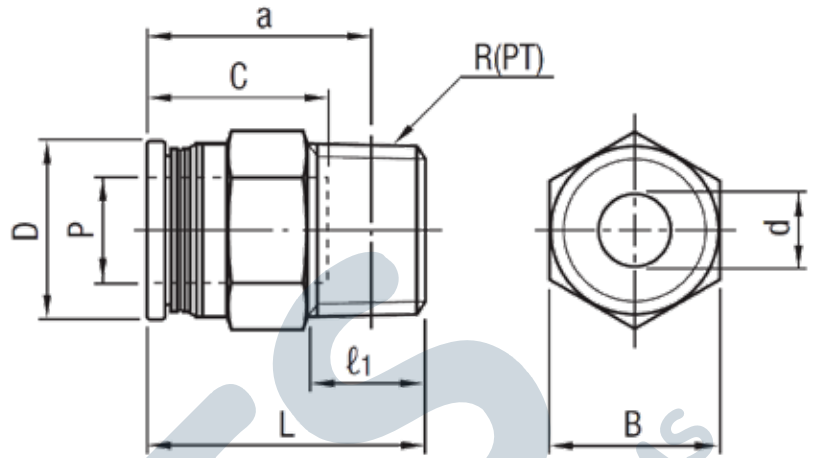
Order Code No.
M-POCL 8-01-L50



Code	No.	Matching tubes Outer x Inner dia.	R(PT)	B	D ₁	L	a	F	l ₁	Tube inserting hole			
										Hole dia. P	Depth C		
M-POCL	8-01-L 40	8 x 6	1/8	5	11	48.5	44.5	26.5	8	8	18		
	8-01-L 50					58.5	54.5						
	8-01-L 60					68.5	64.5						
	8-01-L 70					78.5	74.5						
	8-01-L 80					88.5	84.5						
	8-01-L 90					98.5	94.5						
	8-01-L 100					108.5	104.5						
	8-01-L 110					118.5	114.5						
	8-02-L 50					58.5	52.5					-	11
	8-02-L 60					68.5	62.5						
	8-02-L 70					78.5	72.5						
	8-02-L 80					88.5	82.5						

Fitting Joints

ข้อต่อตม (M-KC)

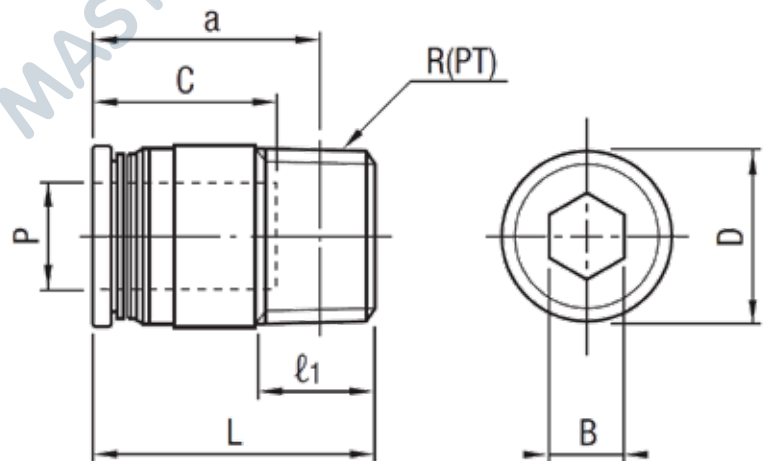


Code	M-KC
Material	Resin + Brass with Nickel plating

Order Code No.
M-KC 10-01-1

Code	No.	Matching tubes Outer x Inner dia.	R(PT)	D	d	L	a	B	l ₁	Tube inserting hole	
										Hole dia. P	Depth C
M-KC	4-01-1	4 x 2.5	1/8	9.4	2.5	20.6	16.6	10	8	4	14.5
	6-01-1	6 x 4									
	6-02-1		8 x 6	1/8	13.4	6	27.4	23.4	14	8	17.7
	8-01-1	10 x 7.5									
	8-02-1		12 x 9	3/8	19.4	8.5	35.2	29.2	21	11	22.6
	10-01-1	3/8									
	10-02-1		10 x 7.5	1/4	16.4	8	30.1	24.1	17	11	10
	10-03-1	12 x 9									
	12-02-1		12 x 9	3/8	19.4	9	31.2	24.9	21	12	12
	12-03-1										

Fitting Joints ข้อต่อตม (M-KOC)



Code	M-KOC
Material	Resin + Brass with Nickel plating

Order Code No.
M-KOC 8-01-1

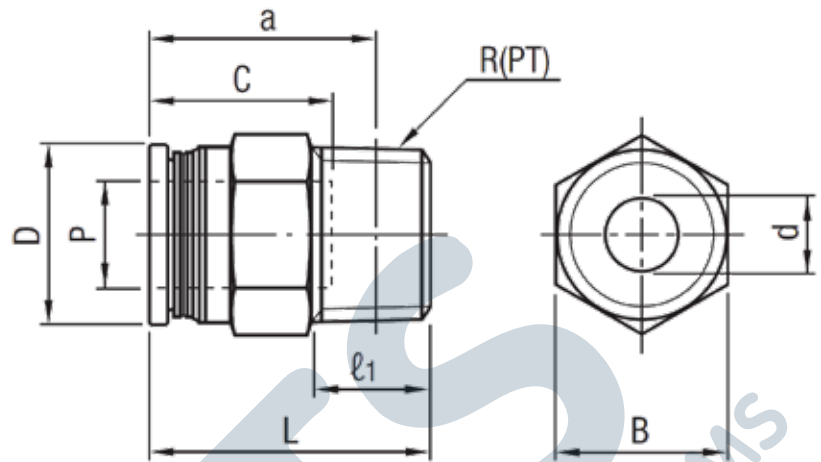
Code	No.	Matching tubes Outer x Inner dia.	R(PT)	D	L	a	B	l ₁	Tube inserting hole	
									Hole dia. P	Depth C
M-KOC	4-01-1	4 x 2.5	1/8	9.9	20.6	16.6	2.5	8	4	14.5
	6-01-1	6 x 4								
	8-01-1	8 x 6	1/4	13.9	26.1	20.1	6	11	8	17.7
	8-02-1									
	10-01-1	12 x 9	3/8	20.8	31.2	24.9	8	12	12	22.6
	10-02-1									
	10-03-1	12 x 9	3/8	20.8	31.2	24.9	8	12	12	22.6
	12-03-1									

Fitting Joints

ข้อต่อตรง (M-120KC)

A

Standard Components
for Plastic Mold

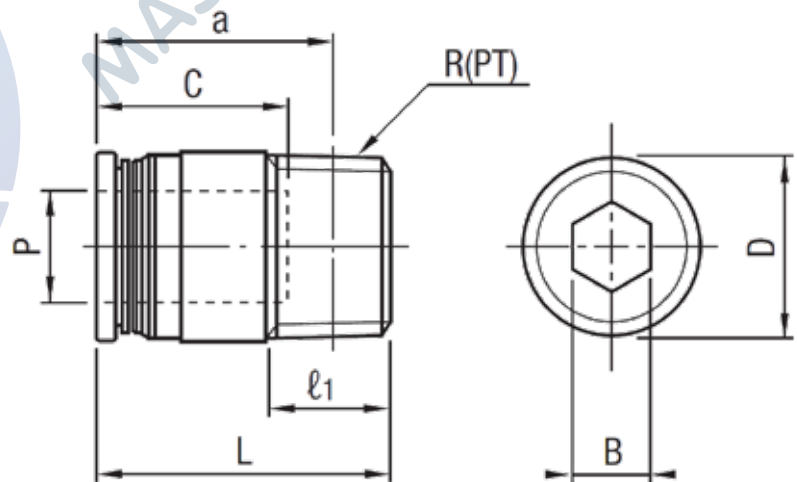


Code	M-120KC
Material	Resin + Brass with Nickel plating

Order Code No.
M-120KC 6-01-1-F

Code	No.	Matching tubes Outer x Inner dia.	R(PT)	D	d	L	a	B	ℓ ₁	Tube inserting hole	
										Hole dia. P	Depth C
M-120KC	6-01-1-F	6 x 4	1/8	11.4	4	22.2	18.2	12	8	6	16.6
	8-01-1-F	8 x 6		13.4	6	27.4	23.4	14		8	8
	8-02-1-F		1/4	26.1		20.1	17	11	10	20	
	10-01-1-F	1/8	16.4	8	30.1	26.1		8			
	10-02-1-F	1/4			24.1	11					
	10-03-1-F	3/8	28.6	22.3	12						
	12-02-1-F	1/4	19.4	8.5	35.2	29.2	21	11	12	22.6	
	12-03-1-F	3/8			9	31.2	24.9	12			

Fitting Joints ข้อต่อตรง (M-120KOC)



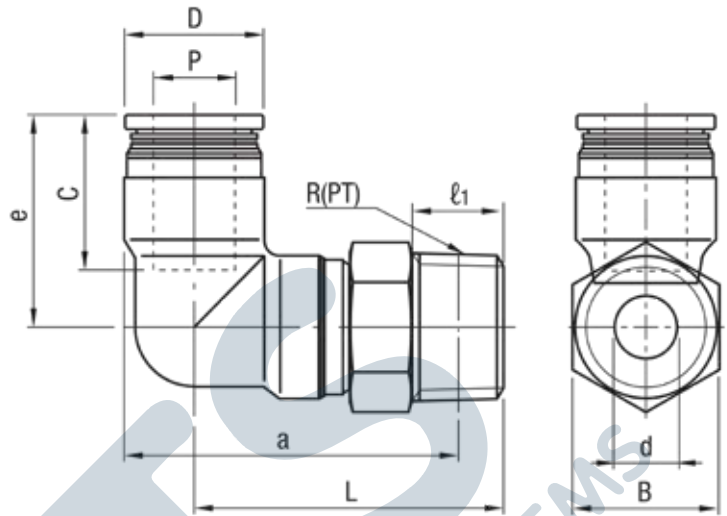
Code	M-120KOC
Material	Resin + Brass with Nickel plating

Order Code No.
M-120KOC 8-02-1-F

Code	No.	Matching tubes Outer x Inner dia.	R(PT)	D	L	a	B	ℓ ₁	Tube inserting hole	
									Hole dia. P	Depth C
M-120KOC	6-01-1-F	6 x 4	1/8	11.9	22.2	18.2	4	8	6	16.6
	8-01-1-F	8 x 6		13.9	27.4	23.4	5		8	8
	8-02-1-F		1/4	26.1	20.1	6	11	10	20	
	10-02-1-F	10 x 7.5	16.9	29.1	23.1					
	12-03-1-F	12 x 9	3/8	20.8	31.2	24.9	8	12	12	22.6

Fitting Joints

ข้อต่อทอง (M-KL)

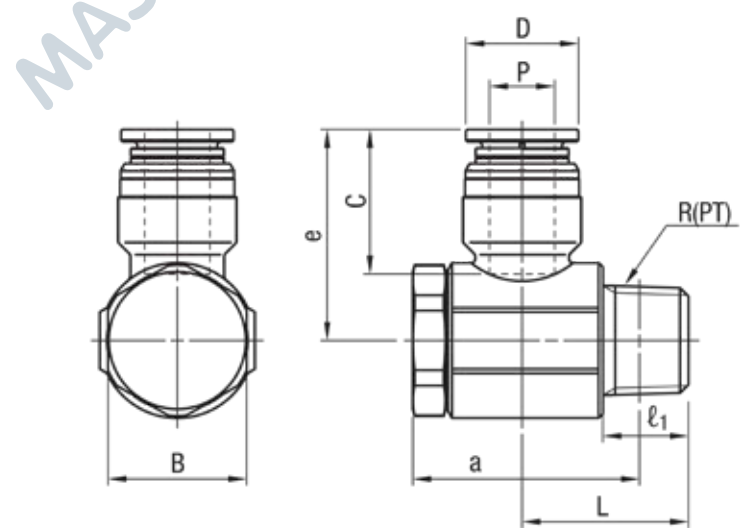


Code	M-KL
Material	Resin + Brass with Nickel plating

Order Code No.
M-KL 8-01-1

Code	No.	Matching tubes Outer x Inner dia.	R(PT)	D	d	L	a	e	B	ℓ ₁	Tube inserting hole		
											Hole dia. P	Depth C	
M-KL	4-01-1	4 x 2.5	1/8	10.5	2.5	22.8	24.1	17.6	10	8	4	14.5	
	6-01-1	6 x 4		12.5	4	25	27.3	20.1	12		6	16.5	
	8-01-1	8 x 6		14.5	6	28	31.3	22.3	14		11	8	17.7
	8-02-1		31			32.2							
	10-01-1	10 x 7.5	1/8	18.5	8	32.5	37.8	26.1	17	11	10	20	
	10-02-1					1/4	35.5						38.7
	10-03-1					3/8	36.5						39.4
	12-02-1	12 x 9	1/4	21.5	9	37.5	42.2	29.7	21	11	12	22.6	
	12-03-1					3/8	38.5						42.9

Fitting Joints ข้อต่อทอง (M-KH)



Code	M-KH
Material	Resin + Brass with Nickel plating

Order Code No.
M-KH 10-02-1

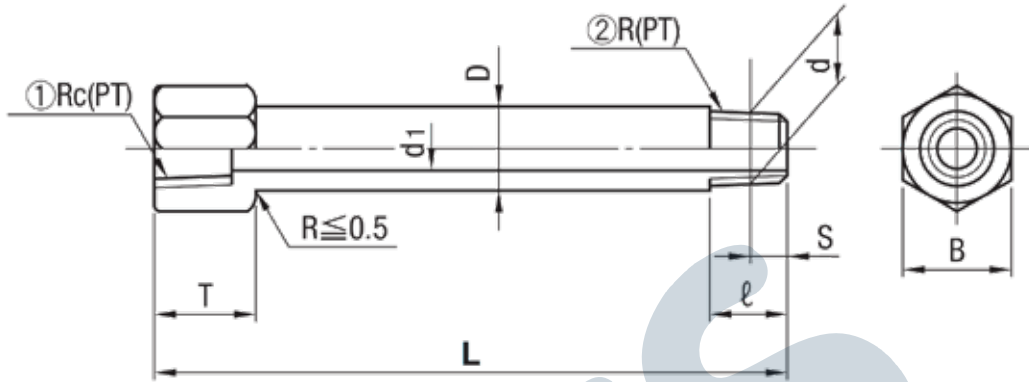
Code	No.	Matching tubes Outer x Inner dia.	R(PT)	D	Allen size B	L	a	e	ℓ ₁	Tube inserting hole	
										Hole dia. P	Depth C
M-KH	6-01-1	6 x 4	1/8	12.5	14	15.6	23.8	23.2	8	6	16.5
	8-01-1	8 x 6	1/8	14.5	14	15.6	23.8	24.4	8	8	17.7
	8-02-1		1/4		17	20.4	28.3	25.9	11		
	10-02-1	10 x 7.5	1/4	18.5	17	20.4	28.3	28	11	10	20
	12-03-1	12 x 9	3/8	21.5	21	23.1	32.4	32.4	12	12	22.6

Cooling Joints

ข้อต่อน้ำ (JTW / JTWS)

A

Standard Components
for Plastic Mold

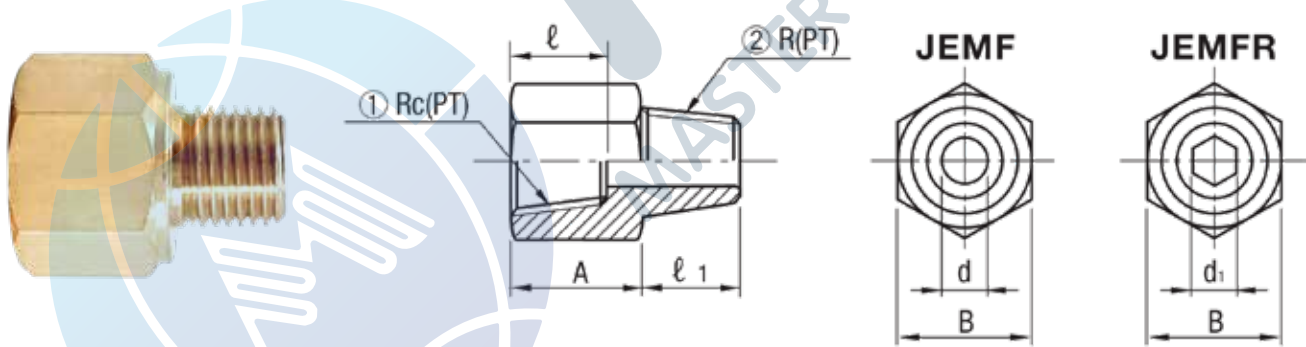


Code	Material
JTW	Brass
JTWS	SUS304

Order Code No. x L
JTW 1 x 170

Code	No.	B	T	D	d1	l	S	d	① Rc(PT)	② R(PT)	L	
											5mm increments	10mm increments
JTW JTWS	1	14	13	10.5	6	10	3.97	9.728	1/8	1/8	30 - 200	210 - 300
	2	17	16	13.8	8	10	6.01	13.157	1/4	1/4		
	3	21	17	17.3	10	12	6.35	16.662	3/8	3/8		

Cooling Joints ข้อต่อน้ำหล่อ (JEMF / JEMFR)



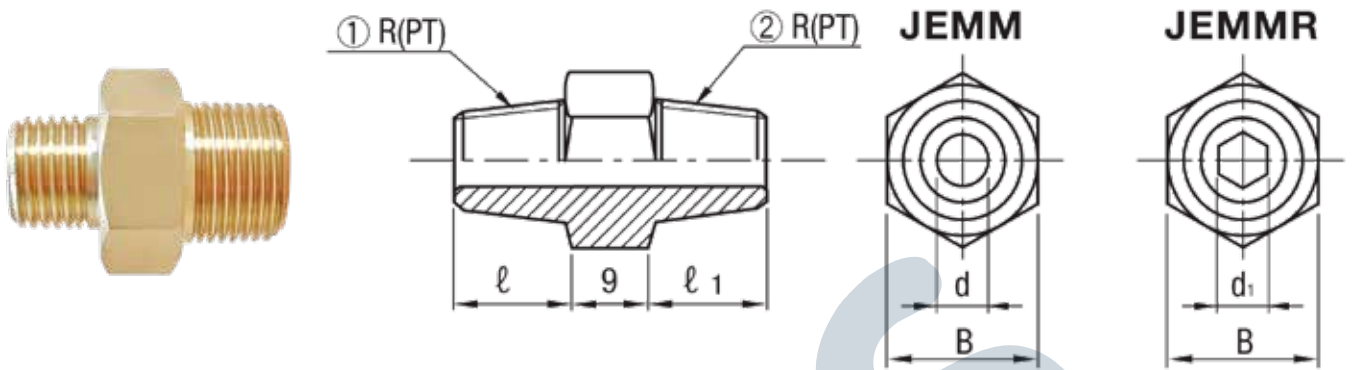
Code	JEMF / JEMFR
Material	Brass

Order Code No.
JEMF 21

Code	No.	① Rc(PT)	② R(PT)	A	B	d	⊕d1	l	l1
JEMF JEMFR	11	1/8	1/8	14	17	6	⊕6	10	10
	12		1/4						
	21		1/8						
	22	1/4	1/4	16	21	8	⊕8	12	12
	23		3/8						
	31	3/8	1/8	16	21	6	⊕6	12	10
	32		1/4						
	33		3/8						

Cooling Joints

ข้อต่อทองเหลือง (JEMM / JEMMR)



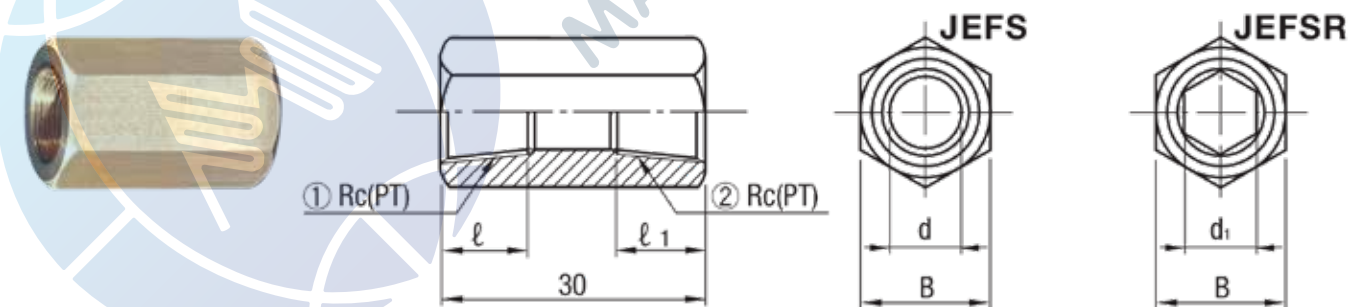
Code	JEMM / JEMMR
Material	Brass

Order Code No.
JEMM 22

Code	No.	① R(PT)	② R(PT)	B	d	⬡ d1	ℓ	ℓ1
JEMM JEMMR	11	1/8	1/8	14	6	⬡ 6	10	10
	12		1/4	17				12
	13		3/8	21				10
	22	1/4	1/4	17	8	⬡ 8		10
	23		3/8	21				12
	33		3/8	3/8				21

Tapered Screw Conversion Plugs

ข้อต่อแปลงเกลียว (JEFS / JEF SR)



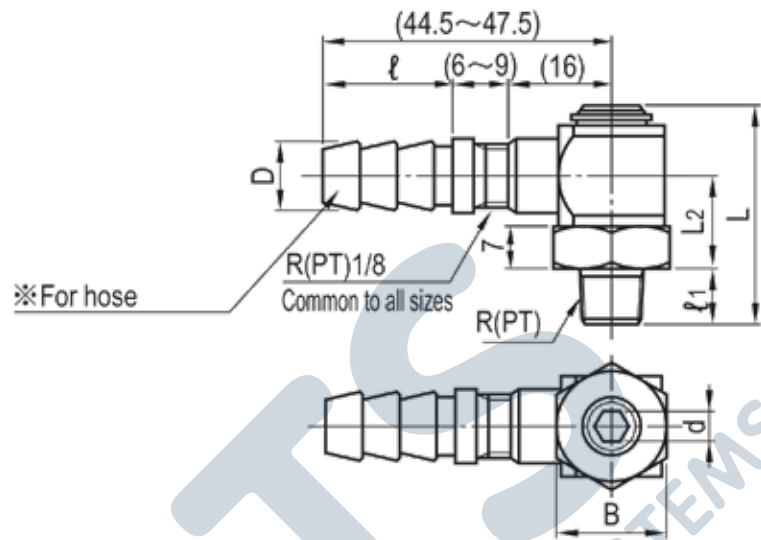
Code	JEFS / JEF SR
Material	Brass

Order Code No.
JEFS 12

Code	No.	① R(PT)	② R(PT)	B	d	⬡ d1	ℓ	ℓ1
JEFS JEF SR	11	1/8	1/8	17	6	⬡ 6	10	10
	12		1/4					12
	22	1/4	3/8	19	8	⬡ 8		10
	23			22				12
	33			3/8				22

L-Shaped Swivel Joints

ข้อต่อตัวแอล (LSN)

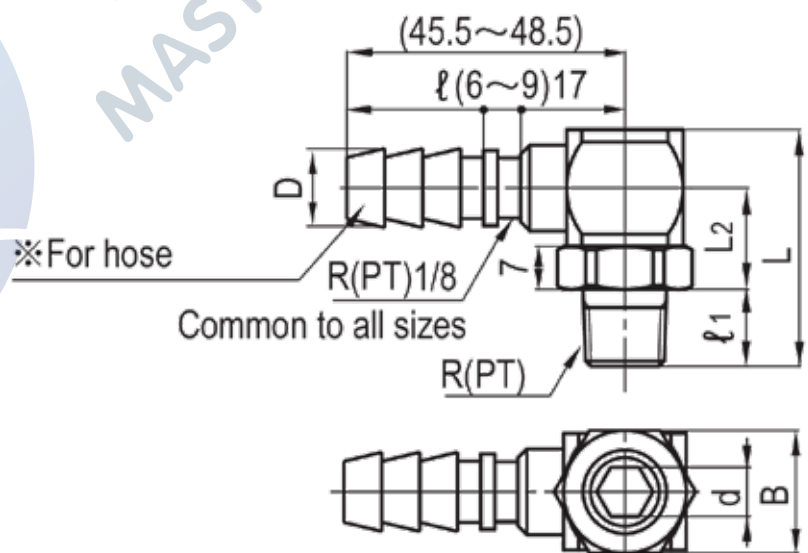
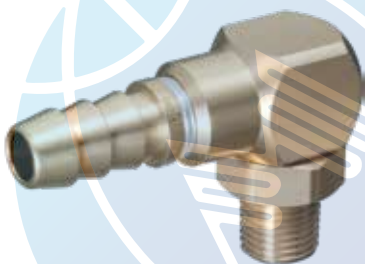


Code	LSN
Material	Brass

Order Code No.
LSN 1

Code	No.	For hose		L	L ₂	Allen size B	∅d ₁	R(PT)	ℓ ₁	Max. pressure MPa (kgf/cm ²)
		D	ℓ							
LSN	1	12.6	22.5	36.5	15.75	19	∅5	1/8	9.5	1.0 (10)
	2			39.5			∅6	1/4	12.5	
	3			42.5			∅6	3/8	13.5	

L-Shaped Swivel Joints ข้อต่อตัวแอล (LSNM)



Code	LSNM
Material	Brass

Order Code No.
LSNM 1

Code	No.	For hose		L	L ₂	Allen size B	∅d ₁	R(PT)	ℓ ₁	Max. pressure MPa (kgf/cm ²)
		D	ℓ							
LSNM	1	12.6	22.5	35.5	16.5	20	∅6	1/8	9.5	1.0 (10)
	2			38.5			∅8	1/4	12.5	
	3			39.5			∅8	3/8	13.5	

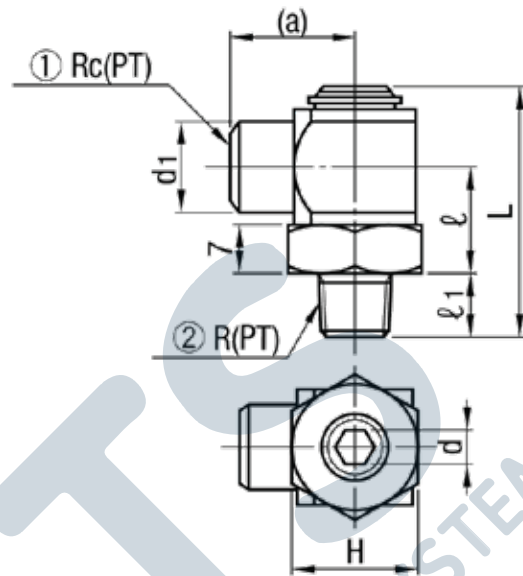
L-Shaped Swivel Joints

ข้อต่อต่อแฉก (LSNF)



Code	LSNF
Material	Brass

Order Code No.
LSNF 1



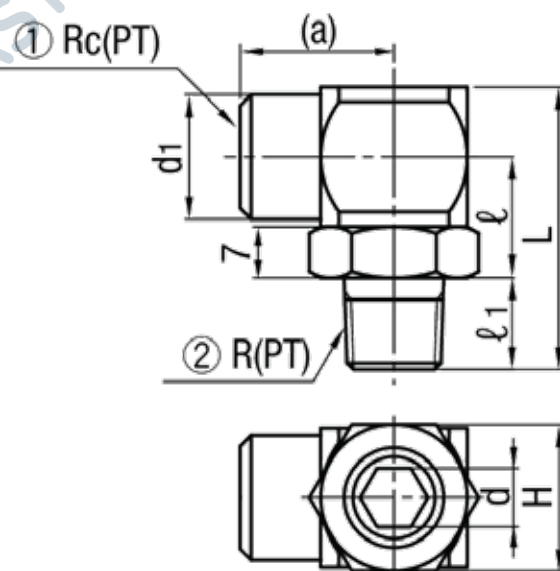
Code	No.	① Rc(PT)	② R(PT)	H	d1	∅d1	L	ℓ	ℓ1	(a)
LSNF	1	1/8	1/8	19	14	∅5	36.5	15.75	9.5	16
	2	1/4	1/4		17	∅6	39.5		12.5	20.5
	3	3/8	3/8		19		42.5		17.75	13.5

L-Shaped Swivel Joints ข้อต่อต่อแฉก (LSNFM)



Code	LSNFM
Material	Brass

Order Code No.
LSNFM 1



Code	No.	① Rc(PT)	② R(PT)	H	d1	∅d1	L	ℓ	ℓ1	(a)
LSNFM	1	1/8	1/8	20	14	∅6	35.5	16.5	9.5	17
	2	1/4	1/4		17	∅8	38.5		12.5	20.5
	3	3/8	3/8		19		39.5		13.5	24

L-Shaped Swivel Joints

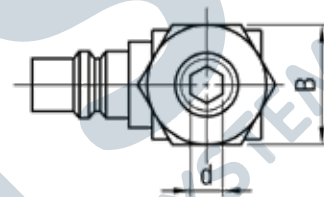
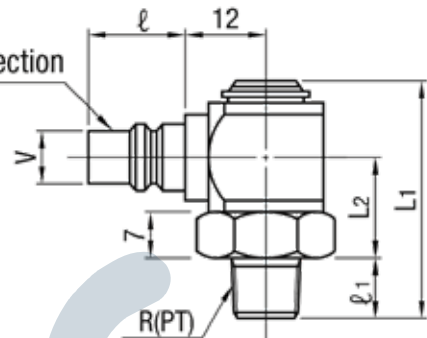
ข้อต่อตัวแอล (LSP)

A

Standard Components
for Plastic Mold



※Socket connection section



Code	LSP
Material	Brass

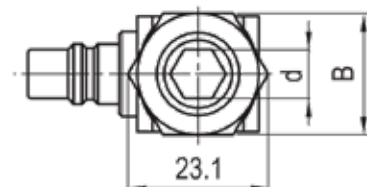
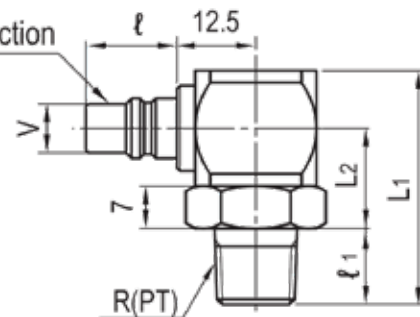
Order Code No.
LSP 1

Code	No.	R(PT)	Matching Sockets	Socket connection parts		L1	L2	Allen size B	d	l1
				V	l					
LSP	1	1/8	Mold Coupler Series Socket hole diameter V = 8	8	15	36.5	15.75	19	6	9.5
	2	1/4				39.5				8
	3	3/8	Common to all sizes			42.5	17.75		8	13.5

L-Shaped Swivel Joints ข้อต่อตัวแอล (LSPM)



※Socket connection section



Code	LSPM
Material	Brass

Order Code No.
LSPM 1

Code	No.	R(PT)	Matching Sockets	Socket connection parts		L1	L2	Allen size B	d	l1
				V	l					
LSPM	1	1/8	Mold Coupler Series Socket hole diameter V = 8	8	15	35.5	16.5	20	6	9.5
	2	1/4				38.5				8
	3	3/8	Common to all sizes			39.5	8		13.5	